

NEW

[www.okw.co.uk](http://www.okw.co.uk)



# ENCLOSURES AND TUNING KNOBS

FOR TODAY'S ELECTRONICS EQUIPMENT



**OKW**  
GEHÄUSE  
SYSTEME



FOR MORE THAN 60 YEARS, OKW HAS BEEN SETTING CREATIVE STANDARDS FOR ENCLOSURES AND TUNING KNOBS – OFFERING A WIDE RANGE OF CUSTOMISATION SERVICES. THIS IS HOW YOU CREATE HIGH-VALUE, APPLICATION-SPECIFIC ELECTRONICS PACKAGING AND CONTROLS TAILORED TO YOUR CUSTOMERS' REQUIREMENTS.

OKW MANAGEMENT

Dipl.-Ing. Christoph Schneider and Dipl.-Betriebswirtin (BA) Yvonne Ellwanger



## CONTENT

04

**SOLID-BOX**

Robust IP 66/IP 67 enclosures for industrial applications.

06

**MINI-DATA-BOX**

Miniaturised IP 65 enclosures for IIoT/sensor applications.

08

**CONNECT**

Handheld enclosures for wired electronics, now available in a new slimline size.

10

**SMART-PANEL**

Elegant wall-mounted enclosures for modern control units. Now available in a new, larger version.

12

**RAILTEC B**

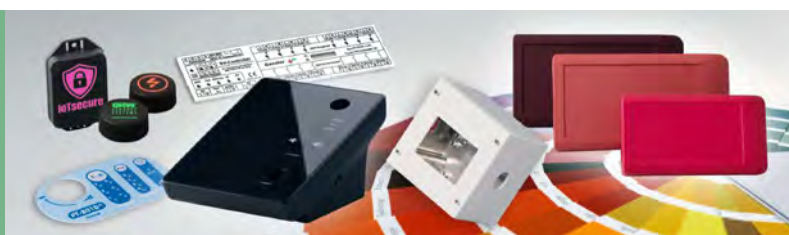
RAILTEC B enclosures are now available with closed connection sides and a large operating surface.

14

**CABLE GLANDS**

Cable glands (M12 to M20) with integrated pressure compensation elements are new in the range.

15

**CUSTOMISATION**

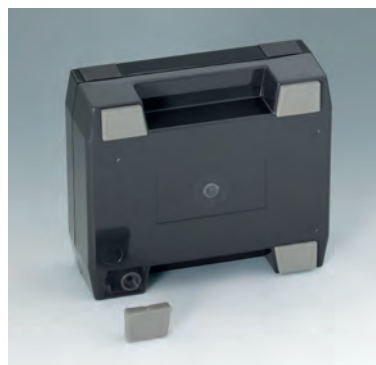
Enclosures and operating elements made to measure according to your needs.

21

**TUNING KNOBS**

Award-winning tuning, control and collet knobs in ergonomic, modern and classic designs.





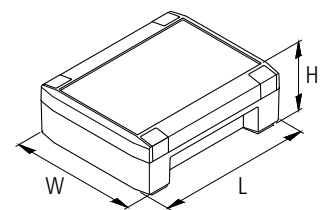
# SOLID-BOX

## ROBUST IP 66/IP 67 ENCLOSURES FOR INDUSTRIAL APPLICATIONS

Robust, waterproof and stylish – the new SOLID-BOX enclosure range satisfies all the requirements that a modern electronic/electrical housing must meet in industrial environments, as well as in protected outdoor areas.

### PRODUCT ADVANTAGES

- three enclosure sizes in two standard colours
- advanced design with a modern, highly polished surface; snap-on trims in the top panel conceal all the fixing screws
- can be used as desktop and wall-mounted enclosures



- high IP 66/IP 67 protection class and IK 08 impact protection offer safety – even in harsh environments; the seal is pre-fitted in the top part
- excellent, flame-retardant V-0 rated material (1.50 mm) with increased heat distortion temperature (Vicat/B 120 = 110°C), chlorine- and bromine-free flame resistance
- enclosure assembly with rust-proof, captive Torx screws outside the sealed interior
- two recessed areas in the bottom part for the installation/protection of connectors, switches and other interfaces – easy and user-friendly to connect
- recessed operating area in the top for flush fitting a membrane keypad or product label



#### MATERIAL/COLOUR

- PC+ABS (UL 94 V-0), anthracite grey (RAL 7016)
- PC+ABS (UL 94 V-0), light grey (RAL 7035)

#### OUTSIDE DIM. IN MM

| SOLID-BOX | W x L x H      |
|-----------|----------------|
| 115       | 135 x 115 x 50 |
| 145       | 180 x 145 x 60 |
| 175       | 225 x 175 x 70 |

#### PROTECTION CLASS IP 66/67, IK 08

#### CUSTOMISING

On request we can also custom mould many of our enclosures in special colours/materials to match your exact requirements.

- CNC machining
- printing/laser marking
- decor foils
- EMC shielding
- assembly of accessories



#### PRODUCT ADVANTAGES

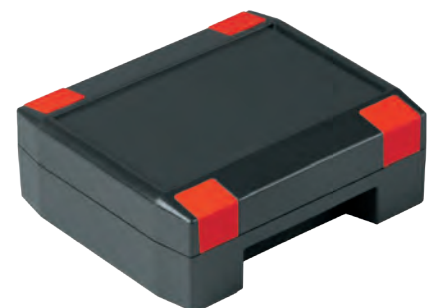
- screw channels under the design trims allow for direct, concealed wall mounting
- mounting points on the rear of sizes 145 and 175 match the hole patterns of VESA MIS-D 75/100
- integrated fastening pillars for PCBs, DIN rails and mounting plates
- hinges (accessory) retain the top panel in place when open
- enclosure feet kit (accessory) for non-slip positioning on a desktop



#### APPLICATIONS

Ideal for high-quality electronic and electrical equipment used indoors or in protected outdoor areas.

- plant and machine construction
- heating, air conditioning and ventilation technology
- information and communications technology (ICT)
- measuring and control technology
- IoT/IIoT
- Smart Factory/Industry 4.0
- agriculture, farming
- gateways
- data loggers
- electrical installations
- sensor systems
- safety engineering







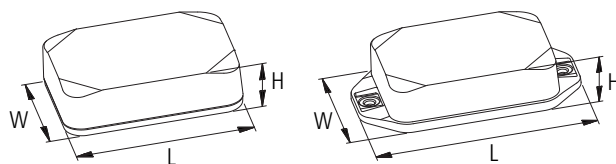
# MINI-DATA-BOX

## MINIATURISED IP 65 ENCLOSURES FOR IIOT/SENSOR APPLICATIONS

MINI-DATA-BOX compact 'go anywhere' enclosures for a wide range of indoor and outdoor electronics. The lid's 'diamond cut' design reduces weight and enhances the aesthetics.

### PRODUCT ADVANTAGES

- modern enclosure design with elegant designer corners
- 40 standard enclosures
- two basic shapes: S (square) and E (edge)
- bottom part with/without flanges for screws or cable ties



- flanges provide fast mounting to walls, ceilings, rails or tube profiles and masts
- flat or high top part for individual installation configurations
- flat surfaces for interfaces – for easy and user-friendly connections
- robust construction thanks to an all-round tongue-and-groove joint
- IP 65 (accessory seal) provides a high level of ingress protection, even in harsh environments
- special colours available on request



#### MATERIAL / COLOUR

##### MINI-DATA-BOX WITH/WITHOUT FLANGES

- ASA+PC (UL 94 V-0), anthracite grey (RAL 7016)
- ASA+PC (UL 94 V-0), traffic white (RAL 9016)

##### NEW – MINI-DATA-BOX WITH FLANGES

- Top part: ASA+PC (UL 94 V-0), traffic white (RAL 9016)
- Bottom part: ASA+PC (UL 94 V-0), traffic grey A (RAL 7042)

#### PROTECTION CLASS IP 65 OPT., IP 40

#### OUTSIDE DIM. IN MM

|      | TYPE | W x L x H    |
|------|------|--------------|
| S40  | flat | 40 x 40 x 15 |
| SF40 |      |              |
| S40  | high | 40 x 40 x 20 |
| SF40 |      |              |
| S50  | flat | 50 x 50 x 15 |
| SF50 |      |              |
| S50  | high | 50 x 50 x 20 |
| SF50 |      |              |
| E40  | flat | 60 x 40 x 15 |
| EF40 |      |              |
| E40  | high | 60 x 40 x 20 |
| EF40 |      |              |
| E50  | flat | 70 x 50 x 15 |
| EF50 |      |              |
| E50  | high | 70 x 50 x 20 |
| EF50 |      |              |



### PRODUCT ADVANTAGES

- flame-resistant ASA+PC material in the standard colours traffic white and anthracite grey.  
**NEW COLOUR COMBINATION:** enclosure with flanges also available in two colours, in traffic white (top part) and traffic grey A (bottom part)
- fixing supports for PCBs and components in the top and bottom parts; alternatively, potting of electronic assemblies possible
- enclosure assembled with stainless Torx steel screws

OKW can supply MINI-DATA-BOX fully customised. Enclosures are delivered to the customer ready for the installation of electronic components straight away, simplifying the supply chain. OKW's customisation services include machining, lacquering, printing, laser marking, EMC shielding and assembly of accessories.

### APPLICATIONS

- IoT/IIoT
- sensor systems
- smart logistics
- peripheral and interface equipment
- automation
- environmental technology
- measurement and control engineering
- security and monitoring technology
- information and communications technology (ICT)







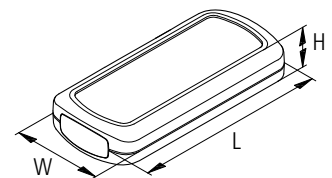
# CONNECT

HANDHELD ENCLOSURES FOR WIRED ELECTRONICS,  
NOW AVAILABLE IN NEW SLIMLINE SIZE

The CONNECT handheld enclosures range is ideal for wired and battery-powered mobile applications.

The housing consists of two enclosure shells, convex and flattened with a recessed panel. Both housing shells are simply snapped together without screws. This saves time in the assembly and can also be freely selected on the front of the device. The open recesses at both ends can be closed with cable grommets and/or end caps as required.

Smart, ergonomic CONNECT is perfect for remote controls, data systems engineering, network technology, building services, safety systems, sensors, IoT/IIoT, medical devices, measurement and control.



## PRODUCT ADVANTAGES

- **NEW:** CONNECT S with a width of only 42 mm is particularly easy to grip. It is ideal for remote controls, measuring instruments, test instruments etc. or as an interface enclosure with/without a cable connection
- two enclosure shells, convex and flattened with a recessed panel
- the two shells snap into each other, no screws required, this saves time during assembly, and you can also choose the front side of the device
- cutouts at both ends; to complete the enclosure, end parts and/or cable glands can be fitted
- CONNECT S & M in three enclosure lengths each to match the application exactly





#### MATERIAL / COLOUR

Enclosure shell:

- ASA+PC-FR (UL 94 V-0), off-white (RAL 9002)
- ASA+PC-FR (UL 94 V-0), black (RAL 9005)

Front parts:

- ASA+PC-FR (UL 94 V-0), off-white (RAL 9002)
- ASA+PC-FR (UL 94 V-0), black (RAL 9005)

Cable gland:

- TPE, volcano
- TPE, black

#### OUTSIDE DIM. IN MM

| CONNECT S | W x L x H     |
|-----------|---------------|
| 60        | 60 x 42 x 22  |
| 90        | 90 x 42 x 22  |
| 120       | 120 x 42 x 22 |
| CONNECT M | W x L x H     |
| 76        | 54 x 76 x 22  |
| 116       | 54 x 116 x 22 |
| 156       | 54 x 156 x 22 |

#### CUSTOMISING

- CNC machining
- lacquering
- printing/laser marking
- EMC shielding
- decor foils
- assembly of accessories



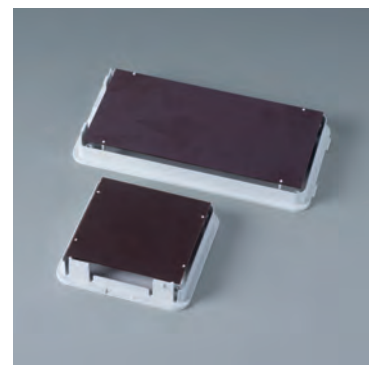
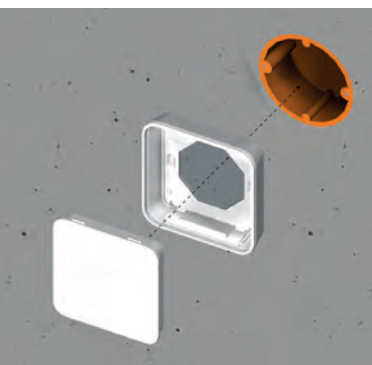
#### PRODUCT ADVANTAGES

- the enclosure shells and the end parts are made of UV-stabilised V-0 material
- protection class IP 40 (with end parts)
- integrated strain relief with the cable gland kit
- enough room for the installation of compact displays, LEDs and USB connectors and measuring sensors
- recessed surface to protect the membrane keyboard, decor foil or label
- attachment pillars for PCBs and components in the flat enclosure shell
- holding clamps for round tubes up to  $\varnothing$  32 mm available as accessories (CONNECT S: 90/120 mm long, CONNECT M: 116/156 mm long)
- holder for secure storage on the wall or similar as an accessory

#### APPLICATIONS

- data systems engineering
- network technology
- building services systems
- safety engineering
- IoT/IIoT, Industry 4.0
- medical and therapeutic applications
- analytical instruments in the laboratory
- measuring technology, including detectors with measuring sensors, test systems/instruments
- data loggers in environmental technology
- sensor systems





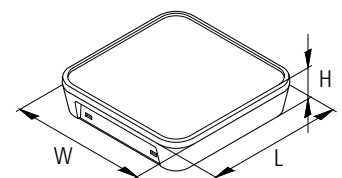
# SMART-PANEL

ELEGANT WALL-MOUNTED ENCLOSURE FOR MODERN CONTROL UNITS, NOW IN A NEW SIZE

SMART-PANEL is designed specifically for today's intelligent building control and monitoring technology. These elegant enclosures fit seamlessly into modern residential, commercial and industrial environments.

## PRODUCT ADVANTAGES

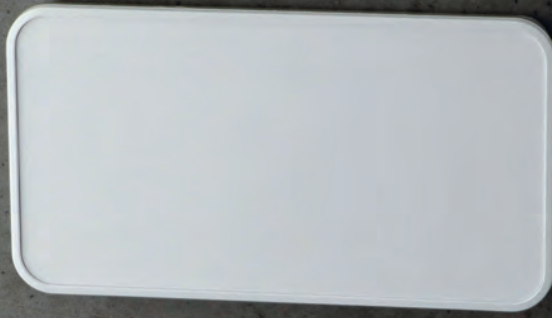
- slim enclosure design in three plan sizes: 84 x 84 mm, 114 x 114 mm and 155 x 84 mm
- prepared for installation on standard flush-mounted/cavity wall boxes
- **S84/E155**: with maximum installation opening 61 mm/double flush-mounted boxes as well as larger, international installation boxes up to a maximum height of 150 mm/width 61 mm



- **S114**: for larger wall boxes up to a maximum height of 100 mm/width 100 mm
- great looking – bottom part highly polished, top part with fine surface structure
- high-quality V-0 ASA+PC in traffic white (RAL 9016)
- snap-in screwless assembly for rapid installation
- flat, recessed area at one end for USB and Mini-USB connectors etc. as well as for opening the enclosure by means of a separate opening tool (in pairs as accessories)



SMART-PANEL E155



SMART-PANEL S84



SMART-PANEL S114



**MATERIAL / COLOUR**

- ASA+PC (UL 94 V-0), traffic white (RAL 9016)

**OUTSIDE DIM. IN MM**

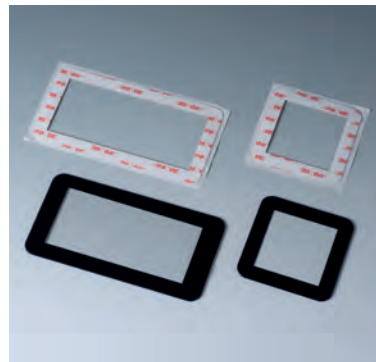
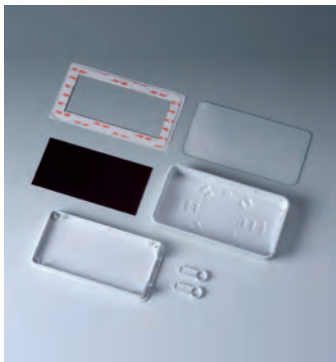
| TYPE | W x L x H        |
|------|------------------|
| S84  | 84 x 84 x 21.3   |
| S114 | 114 x 114 x 21.3 |
| E155 | 155 x 84 x 21.3  |

**PROTECTION CLASS IP 40**

**CUSTOMISING**

If required, we can supply you with the housing fully customised, ready for installation:

- CNC machining
- lacquering
- printing/laser marking
- decor foils
- EMC shielding
- assembly of accessories



**PRODUCT ADVANTAGES**

- recessed control panel protects membrane keypads, display/control elements, touch displays and much more
- assembly of the installation parts in the top part. Push-in phenolic resin hardboard plate as an accessory (size S114 on request - minimum quantity 100 pcs.) protects the underlying electronics from damage during installation/service, if required
- glass plate for high-quality applications included in the accessories range (size S114 on request, minimum quantity 100 pcs.), e.g. for use with displays etc. Rear printing possible on request

**APPLICATIONS**

Ideal for indoor electronics:

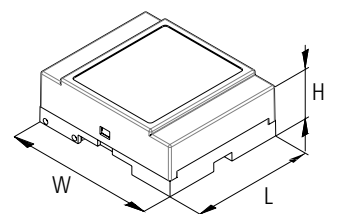
- building services systems, electrical installation
- medical and laboratory technology, healthcare
- smart home
- IoT/IIoT
- office
- wireless communication
- measuring and control technology
- security technology





# RAILTEC B

RAILTEC B ENCLOSURES ARE NOW AVAILABLE WITH CLOSED CONNECTION SIDES AND A LARGE OPERATING SURFACE FOR DISPLAYS, OPERATING ELEMENTS AND INTERFACES



Versatile RAILTEC B plastic enclosures offer fast and simple mounting on to standard DIN EN 60715 TH35 rails.

## PRODUCT ADVANTAGES

- six sizes (2 to 12 modules wide) according to DIN 43880, unit 1; four sizes (2, 4, 6 and 9 modules wide) with low profile - **NEW**: 2 versions; four sizes (2, 4, 6 and 9 modules wide) with flat/high connection level
- fully insulated and protected according to VBG 4 and IEC 529/DIN VDE 0470-1
- flame-resistant material (UL 94 V-0)

- **version I and XI**: for PCB terminal blocks 5.0/5.08 mm pitch
- **version II and XII**: for plug headers 5.0/5.08 mm pitch
- **version III and XIII**: closed case for front connectors, D-SUB connectors, etc.
- **version III and XIII**: closed case for front connectors, D-SUB connectors, etc.
- **version IV**: for PCB terminal blocks 5.0/5.08 mm pitch (1 row)
- **version V**: with knockout perforations 5.0 mm pitch
- **version VI**: open case for fitting different combinations of terminal guards and partition plate; optionally 1 or 2 connection levels
- KNX cover to fit 2 and 4 modules of series VI and flat top parts
- suitable for DIN rails EN 60715 TH35 or direct wall mounting





#### MATERIAL / COLOUR

- Top part:  
PC (UL 94 V-0),  
light grey (RAL 7035)
- Bottom part:  
PPO (UL 94 V-0),  
black (RAL 9005)

#### OUTSIDE DIM. IN MM

| TYPE (LOW PROFILE)   | W x L x H        |
|----------------------|------------------|
| 2 MODULES, VERS. III | 35 x 86 x 31.25  |
| 4 MODULES, VERS. III | 70 x 86 x 31.25  |
| 6 MODULES, VERS. III | 105 x 86 x 31.25 |
| 9 MODULES, VERS. III | 157 x 86 x 31.25 |

**DIN EN 60715 TH35**  
**DIN VDE 0470-1**  
**DIN 43880 UNIT 1**

#### CUSTOMISING

If required, we can supply you with the housing fully customised, ready for installation:

- CNC machining
- laser marking
- decor foils
- assembly of accessories



#### PRODUCT ADVANTAGES

- with/without ventilation slots for good heat dissipation
- flexible assembly: PCB positioning in all three directions; base part with fixing pillars, top parts with guide ridges
- DIN rail clip pre-assembled in base part
- transparent lid (accessory) protects display and operation elements
- protection class < IP 40

#### APPLICATIONS

- universal use as an installation case
- corresponding to the regulations of the machine-building and automotive industries
- Smart Factory/Industry 4.0
- technical equipment for building automation and smart home
- especially for control equipment, such as lighting systems



CABLE GLANDS WITH INTEGRATED PRESSURE COMPENSATION IN LIGHT GREY (RAL 7035) AND BLACK (RAL 9005)



GROMMETS IN BLACK (RAL 9005)



## CABLE GLANDS

### NEW ACCESSORIES: BRAND NEW PRESSURE COMPENSATION GLANDS M12 TO M20

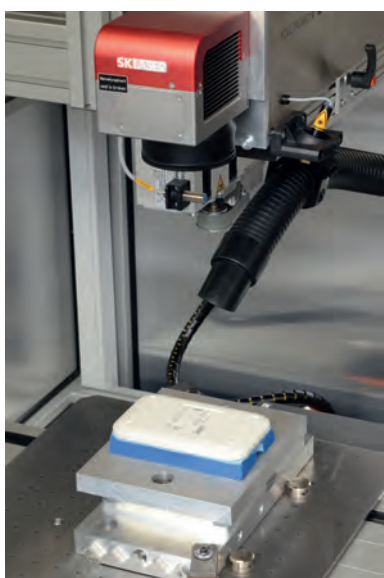
OKW's new cable glands with integrated pressure compensation element provide protection against condensation in hermetically sealed electrical and electronic enclosures. The compensation element provides air flow in the event of temperature and pressure fluctuations. Specifying these cable glands means you won't need to fit an additional pressure compensation gland to adjust the internal pressure of the equipment if condensation is an issue. The new cable glands are available in sizes M12 x 1.5, M16 x 1.5 and M20 x 1.5. They are moulded from light grey (RAL 7035) or black (RAL 9005) polyamide (PA). Clamping blades provide strain relief. Protection class up to IP 68.

ALSO **NEW**: OKW's 'classic' M16 and M20 QUICK FIX cable glands (IP 68) and cable grommets are now available in black (RAL 9005) as well as the existing light grey (RAL 7035). These cable glands are suitable for 1-4 mm housing wall thicknesses. Ideal for universal use – wherever cables and wires have to be reliably installed in enclosures, such as in plant and machinebuilding, automation and electrical engineering, etc. The black versions are ideal for enclosures and cable connections in dark colours.



# CUSTOMISATION ACCORDING TO YOUR REQUIREMENTS

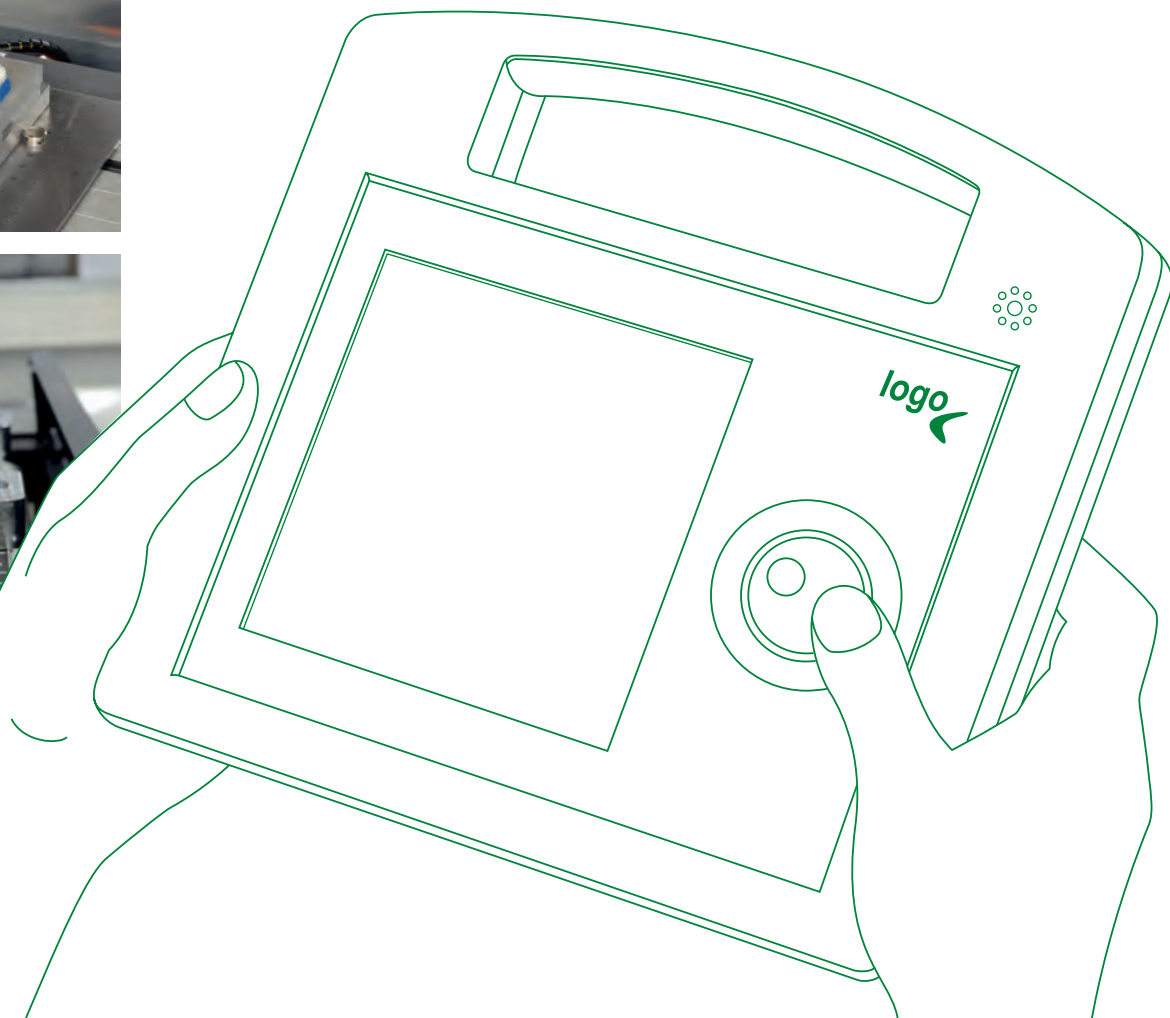
Look at our comprehensive standard range and select the enclosure or tuning knob that best matches your ideas, your components and the needs of your customers. You merely have to tell us what you still need for your product. Together with you we choose the necessary modifications – ideal in terms of price, quality and delivery time – to meet your specific requirements.



WE CAN SUPPLY THE ENCLOSURES AND TUNING KNOBS TO YOUR EXACT REQUIREMENTS, INSTALLATION-READY

We offer:

- CNC Machining
- EMC shielding
- Lacquering
- Special material
- Printing
- Laser marking
- Decor foils
- Installation/Assembly of accessories



# MACHINING

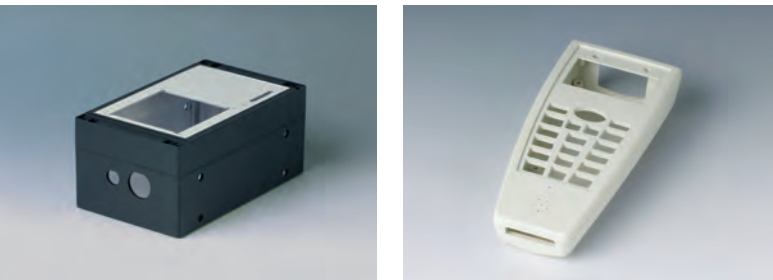
## MACHINING OF ENCLOSURES AND COMPONENTS

We can perform individual machining processes for you, quickly and reliably, for sample or series production quantities. You will receive your enclosures ready for the installation of your electronics

With our modern CNC machining facilities, we can produce individual solutions according to your design or a design proposed by us. We have detailed drawings of numerous enclosures or 3D models for your ideas, ready to download.

Milling, tapping, engraving, drilling, countersinking, cutting and stamping – there is practically no limit to the variety of shapes and designs:

- milling cutouts for interfaces, cable inputs and outputs, displays, operating elements and LEDs in plastic and aluminium
- tapping threads >M2
- recesses to protect decoration foils, membrane keypads and panels
- engraving all kinds of inscriptions, with/without colour lines.



# EMC SHIELDING

## SAFE AND RELIABLE THANKS TO APPLICATION-ORIENTED EMC ALUMINIUM COATING

When it is a question of EMC and the protection of your electronics from external interference as well as increased internal emission noise, OKW Gehäusesysteme is your expert partner.

To shield plastic parts, which offer no natural protection against electromagnetic radiation, we coat the inside of the enclosure with aluminium.

### PROCESS

The aluminium coating is applied in a high vacuum. The 99.98 % pure aluminium is vaporised within a short period of time and is deposited on the plastic surface. The thickness of the coating is approx. 2.5 µm. The aluminium coating is also characterised by good adhesion. To achieve an even better shielding effect, other coating thicknesses are available on request.

### EMC PRODUCTS

In addition to the aluminium coating of enclosures, we can supply conductive seals in individual sizes from ø 1.5 mm – 3 mm.





# LACQUERING

## COLOURS AND SURFACE FINISHES INCREASE THE VALUE OF THE DEVICES

We can lacquer the enclosures and tuning knobs in any colour you wish so that it matches your application or company branding. For special requirements, such as for improving the feel of your product, for metallic effects or for protection from electrostatic discharge, OKW offers a wide choice of lacquers:

- Lacquers in different degrees of lustre. According to your needs, from matt to glossy. Matt lacquers prevent undesirable light reflections, and glossy lacquers offer a refined, modern look.
- Metallic lacquer and colour tones. Finishes in a metallic look.
- **NEW Soft-Touch laquering** — A haptic highlight. Lacquer like artificial leather to improve the feel of your product. Soft-Touch lacquer gives your products a feel as soft as velvet, ensuring pleasantly reliable operation of handheld instruments, for example. NEW: transparent soft-touch lacquer.
- Antibacterial paint: a special protective lacquer which prevents bacteria from settling and multiplying.
- ESD conductive lacquer: special lacquer in black to prevent electrostatic discharges.



# SPECIAL MATERIAL

Show your colours so that your enclosures and operating elements appear as unique as you would like them to be. Discover the different options and effects that colour can have.

## INDIVIDUAL COLOURS

On request we can also produce many of our enclosures and tuning knobs in special colours. To match the colour you require, we can have the natural plastic material coloured and extruded to a high standard. Individual colour adjustments are possible according to a sample, RAL or Pantone shades.

## SPECIAL MATERIAL V-0

Manufacturing of enclosures in flame-retardant plastic material on request.



# PRINTING

## INDIVIDUAL LETTERING USING SCREEN, TAMPO OR DIGITAL PRINTING

You can use printing on your product to give it a personal touch. It is also possible to indicate the function and usage. With precision craftsmanship, we can carry out the required printing to your satisfaction.

Depending on the printing format and type of enclosure, we can offer you screen printing, tampon printing as well as digital printing.

### SCREEN/TAMPO PRINTING

For screen and tampon printing, most colours can be made in our own mixing unit. This guarantees short preparation and processing times. The colours can be defined according to RAL, many Pantone shades or your own sample. Here, a film and a block or screen are required for each colour. On account of the higher fixed costs, this process is suitable for medium-sized quantities.

### DIGITAL PRINTING OF THE PARTS

The digital printing process allows different versions without a great deal of trouble, such as in design, with consecutive numbering, barcodes, technical specifications, etc.



Colour gradations and white as a full-tone colour are also possible.

As a specialist, we can print plastic surfaces (ABS, PC, ASA, ASA+PC) with a height difference of up to 1.4 mm. We can also apply your individual motifs and lettering directly onto the enclosure and control panels! On request we can also produce the printable data for you.

For lettering and colour design, we can digitally produce decor foils quickly and easily for small batches starting with one unit. We would be happy to inform you about the many options available.

We are pleased to print for you:

- Plastic and aluminium parts: Plastic, aluminium and steel parts: enclosures, control panels, display windows, front panels, covers, tuning knobs, lids, dials etc.
- Foils: design foils, stickers, type plates, labels, sales packaging etc.
- Glass: printing by digital printing.



# NEW SCREEN/ TAMPO PRINTING SERVICES

## PRINTING IN FLUORESCENT INKS (FLUORESCENT COLOURS/NEON COLOURS)

Colour example: yellow, orange, red, pink and green. These fluorescent inks convert invisible UV light into visible light. Colours with the same light intensity are then perceived to be brighter. This provides a significant increase in contrast in diffuse light conditions and in hazardous areas. Depending on the application, the fluorescent inks have a warning effect (hi-vis colour) and attract greater attention (signal colour).

## PRINTING WITH PHOTOLUMINESCENT INKS (PHOSPHORESCENT INKS IN SCREEN PRINTING)

These are special lacquers that are mixed with phosphorus particles. They store light energy and emit it again at night or in dark environments using the luminescence (cold glowing) principle. Generally speaking, photoluminescent inks are not intended for dark backgrounds.

Possible fields of application: warning signals, safety and orientation signs, highlighting of important equipment functions (such as for medical equipment) and much more.



# LASER MARKING

## FOR INDIVIDUAL LABELLING, IDENTIFYING OR MARKING

Laser marking is ideal for individual labelling, identifying or marking – especially for very small machine-readable markings such as QR codes, barcodes and DataMatrix codes. Consecutive numbering of parts and the addition of individual texts/logos is quick and easy.

### THE PROCEDURE

Laser marking involves a colour change on the surface. Dark and light plastic parts turn grey at the points to be marked.

### SUITABLE MATERIALS

ABS  
ASA+PC  
ASA+PC-FR  
PC  
PA  
PA GF  
Aluminium

Simply ask our experts. We will be pleased to advise you.





NEW



STAR-KNOBS  
SURFACE-MOUNTED



STAR-KNOBS  
FLUSH-FITTING



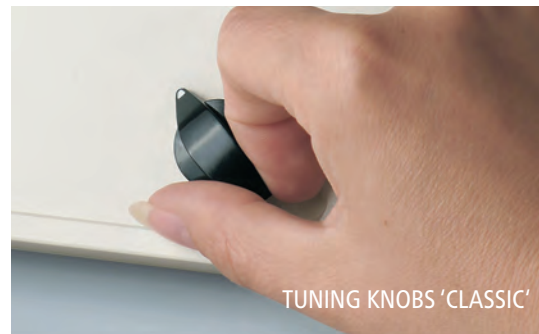
COM-KNOBS



COMBINATION KNOBS



TOP-KNOBS



TUNING KNOBS 'CLASSIC'

# TUNING KNOBS

TUNING, CONTROL AND COLLET KNOBS WITH A NEW ADDITION:  
THE AWARD-WINNING AND SOFT-TOUCH CONTROL-KNOBS

OKW has more than 70 years' experience in the development and production of potentiometer knobs. Today we can offer a wide range of modern and traditional tuning knob designs for spindles from 3 to 8 mm.

Our latest operating elements combine special technical features with a contemporary appearance. This includes optional LED illumination, flush-fitting installation, a main body which is slightly inclined towards the internal axis, function-oriented marking elements, modern colour selection etc.

The OKW range of tuning knobs is well tried and tested for rotary potentiometers with round and flattened shaft ends in accordance with DIN 41591 or 6/4.6 mm. The knobs are fitted using the proven collet fixture, lateral screw fixing or simply by pushing them on. Choose from round knobs, wing knobs, spindle-shaped knobs, pointer knobs or simple rotary switches. Different sizes and combinations offer a wide range of possible solutions.

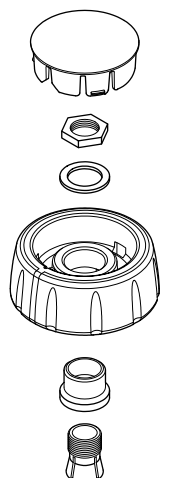
## NEW CONTROL-KNOBS

New ergonomic CONTROL-KNOBS have a soft-touch surface which is easy to grip and feels comfortable in operation.

The high-quality appearance – with/without optional LED illumination – distinguishes this advanced range of tuning knobs as the central element of menu-driven interfaces.

Designed as modern control knobs for rotary potentiometers or encoders; also suitable for rotary touch/click functions used on menu-driven interfaces – typically employed on devices made in high volumes.

- Available in two knob sizes,  $\varnothing$  36 mm and  $\varnothing$  46 mm, each in two standard TPE colours (nero and volcano)
- 16 different versions each size
- with/without pointer line on the side for fine scaling.





www.okw.co.uk



OKW Enclosures Ltd.  
15 Brunel Way  
Segensworth East  
Fareham, PO15 5TX  
United Kingdom  
Phone (01489) 583858  
E-Mail sales@okw.co.uk



#### ASK FOR A SAMPLE!

It's quick and easy online – just go to the OKW website, add the required enclosure/ tuning knob version by clicking 'Add to cart' and tick 'Sample'. Then add your contact details and send off the form. You will receive a confirmation of your request by email, and your sample will be on its way.

Turtle © by  
OKW Gehäusesysteme,  
Buchen, Germany.  
Subject to technical  
modification without notice.  
11/2024.