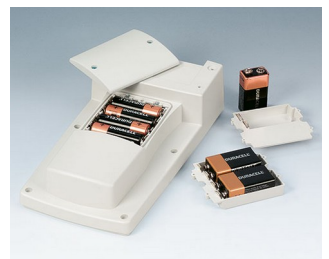


# HAND-TERMINAL

## Handheld enclosures for control systems in production and for outdoors

These tough, attractive and highly functional plastic enclosures are specifically designed for heavy duty handheld electronics equipments.

- impact resistant material
- robust with a high protection class up to IP 65 (sealing kit accessory)
- plenty of space for operating elements, displays, emergency stop switch, enable pushbuttons etc.
- ergonomic hand grip on underside, great to hold
- for control systems with cable connection or battery compartment 4 x AA, 1 x 9 V or 2 x 9 V cells
- optimum weight distribution
- recessed operating area for protecting the membrane keypad
- version I with closed top part
- version II for aluminium front panel assembly
- internal fastening pillars for PCBs



# HAND-TERMINAL

## Applications and Examples

Flexible machine control systems in production and assembly. Terminals for programming and teach-in applications. Classic applications in the field of electrical engineering and electronics, e.g. measurement and control equipment. Mobile terminals, programmers, data collection units and much more.



Analysing water quality

## Customising Options

What do you still need for your own very personal product? We can supply enclosures and tuning knobs with all necessary modifications for fitting your electronic components.

Customising options for Hand-Terminal



Machining



Lacquering



Printing



Laser marking



Decor foils



EMC shielding



Installation / Assembly  
of accessories

# HAND-TERMINAL

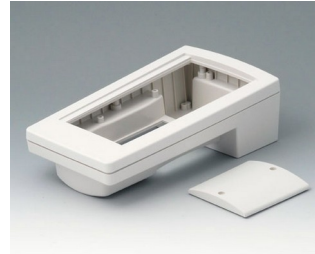
## Select Versions



**A9046107**  
HAND-TERMINAL M, Vers. I  
PC+ABS (UL 94 V-0)  
off-white RAL 9002  
220x120x65mm  
IP 65 opt.



**A9046109**  
HAND-TERMINAL M, Vers. I  
PC+ABS (UL 94 V-0)  
black RAL 9005  
220x120x65mm  
IP 65 opt.

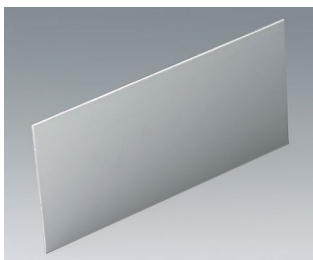


**A9046207**  
HAND-TERMINAL M, Vers. II  
PC+ABS (UL 94 V-0)  
off-white RAL 9002  
220x120x65mm  
IP 65 opt.



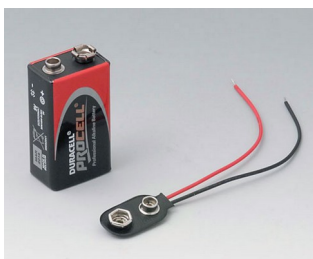
**A9046209**  
HAND-TERMINAL M, Vers. II  
PC+ABS (UL 94 V-0)  
black RAL 9005  
220x120x65mm  
IP 65 opt.

## Accessory to complete

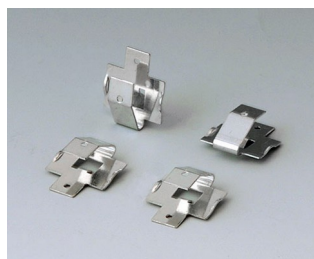


**A9146101**  
Front panel M  
matt anodised  
179x88x2mm

## Accessory "battery"



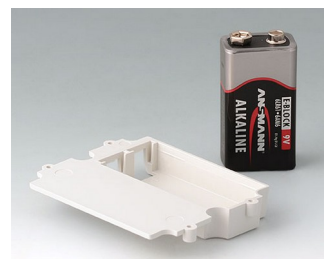
**A9160003**  
Plug-in contact, 1 x 9 V (PP3)



**A9161002**  
Set of battery clips, 2 x 9 V or 4 x AA  
Steel  
tin-plated



**A9174002**  
Battery compartment, 2 x 9 V  
off-white RAL 9002



**A9174003**  
Battery compartment, 1 x 9 V  
off-white RAL 9002

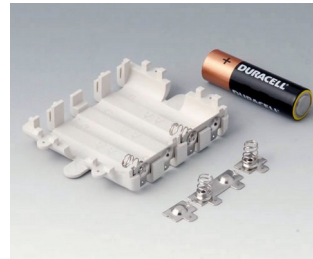
# HAND-TERMINAL



**A9174006**  
Set of battery clips, 1 x 9 V  
Steel  
tin-plated

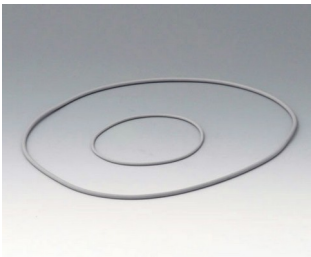


**A9250250**  
Battery spacer  
PE foam  
50x25x4mm

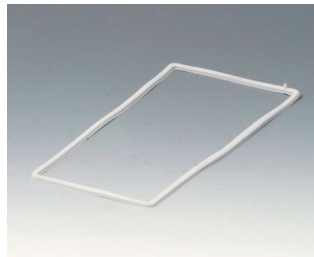


**A9345217**  
Set of battery compartment, 4 x  
AA  
off-white RAL 9002

## Accessory "protection"



**A9146106**  
Sealing kit M



**A9146206**  
Sealing M

## Accessory "screws"



**A0306031**  
Self-tapping screws 3 x 6 mm  
(PZ1)



**A0308031**  
Self-tapping screws 3 x 8 mm  
(PZ1)



**A0308132**  
Self-tapping screw 3 x 8 mm  
(T10)  
Stainless steel

Subject to technical modification without notice. © by OKW Gehäusesysteme, Buchen/Germany.