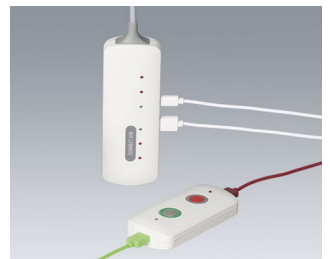


CONNECT

The optimum connection

The CONNECT enclosures range is ideal for wired and battery-powered mobile applications.

- *New:* CONNECT S with a width of only 42 mm is particularly easy to grip. It is ideal for remote controls, measuring instruments, test instruments etc. or as an interface enclosure with/without a cable connection
- two enclosure shells, convex and flattened with a recessed panel
- the two shells snap into each other, no screws required, this saves time during assembly, and you can also choose the front side of the device
- cutouts at both ends; to complete the enclosure, end parts and/or cable glands can be fitted
- CONNECT S & M in three enclosure lengths each to match the application exactly
- the enclosure shells and the end parts are made of UV-stabilised V-0 material
- protection class IP 40 (with end parts)
- integrated strain relief with the cable gland kit
- enough room for the installation of compact displays, LEDs and USB connectors and measuring sensors
- recessed surface to protect the membrane keyboard, decor foil or label
- attachment pillars for PCBs and components in the flat enclosure shell
- holding clamps for round tubes up to \varnothing 32 mm available as accessories (CONNECT S: 90/120 mm long, CONNECT M: 116/156 mm long)
- holder for secure storage on the wall or similar as an accessory



CONNECT

Applications and Examples

Data systems engineering, network technology, building services systems, safety engineering, IoT/ IIoT, medical and therapeutic applications, analytical instruments in the laboratory, measuring technology, including detectors with measuring sensors, test systems/instruments, data loggers in environmental technology, sensor systems, etc.



Gas leak detector



Noise level measurement



Process monitoring with temperature sensor



Receiver and data transfer for EMR



Test probe interface for PC applications



Tool for making colloidal silver solutions



Voltage and current display during trickle charging

Customising Options

What do you still need for your own very personal product? We can supply enclosures and tuning knobs with all necessary modifications for fitting your electronic components. Customising options for Connect



Machining



Lacquering



Printing



Laser marking



Decor foils



EMC shielding



Installation / Assembly of accessories

CONNECT

Select Versions



B2822107
CONNECT S
ASA+PC (UL 94 V-0)
off-white RAL 9002
60x42x22mm



B2822109
CONNECT S
ASA+PC (UL 94 V-0)
black RAL 9005
60x42x22mm



B2823107
CONNECT S
ASA+PC (UL 94 V-0)
off-white RAL 9002
90x42x22mm



B2823109
CONNECT S
ASA+PC (UL 94 V-0)
black RAL 9005
90x42x22mm



B2824107
CONNECT S
ASA+PC (UL 94 V-0)
off-white RAL 9002
120x42x22mm



B2824109
CONNECT S
ASA+PC (UL 94 V-0)
black RAL 9005
120x42x22mm



B2832107
CONNECT M
ASA+PC (UL 94 V-0)
off-white RAL 9002
76x54x22mm



B2832109
CONNECT M
ASA+PC (UL 94 V-0)
black RAL 9005
76x54x22mm



B2833107
CONNECT M
ASA+PC (UL 94 V-0)
off-white RAL 9002
116x54x22mm



B2833109
CONNECT M
ASA+PC (UL 94 V-0)
black RAL 9005
116x54x22mm



B2834107
CONNECT M
ASA+PC (UL 94 V-0)
off-white RAL 9002
156x54x22mm



B2834109
CONNECT M
ASA+PC (UL 94 V-0)
black RAL 9005
156x54x22mm

CONNECT

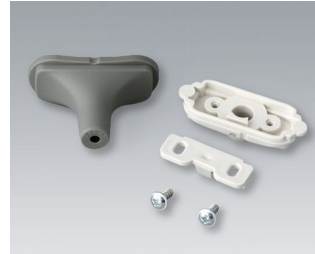
Accessory to complete



B2811207
End part
ASA+PC (UL 94 V-0)
off-white RAL 9002



B2811209
End part
ASA+PC (UL 94 V-0)
black RAL 9005



B2911308
Cable gland kit, 3.4 - 4.2
TPE
volcano



B2911309
Cable gland kit, 3.4 - 4.2
TPE
black RAL 9005



B2911318
Cable gland kit, 4.2 - 5.0
TPE
volcano



B2911319
Cable gland kit, 4.2 - 5.0
TPE
black RAL 9005



B2911328
Cable gland kit, 5.0 - 5.9
TPE
volcano



B2911329
Cable gland kit, 5.0 - 5.9
TPE
black RAL 9005

Accessory "wall/holder"



A9167027
Holding clamp
PA 6 (UL 94 HB)
off-white RAL 9002



A9167029
Holding clamp
PA 6 (UL 94 HB)
black RAL 9005



B2921507
Holder S
ASA+PC (UL 94 V-0)
off-white RAL 9002



B2921509
Holder S
ASA+PC (UL 94 V-0)
black RAL 9005



B2931507
Holder M
ASA+PC (UL 94 V-0)
off-white RAL 9002



B2931509
Holder M
ASA+PC (UL 94 V-0)
black RAL 9005

CONNECT

Accessory "screws"



A0304031
Self-tapping screws 2.2 x 5 mm
(PZ1)

Subject to technical modification without notice. © by OKW Gehäusesysteme, Buchen/Germany.