

## Wall mount enclosures for control units

NET-BOX plastic enclosures have a slim design and stylish curved top section, this makes these modern and elegant housings perfect for wall mounted control units, network nodes and much more.

- three sizes with plenty of room for electronics and interfaces
- the connectors and cables are hidden under the front lid
- the cases are moulded in flame retardant material and can be sealed to IP 65
- simple three part assembly - bottom part, front cover and front lid; there are no visible screws on the front, just two on the underside of the lid
- screw pillars are provided in the bottom part for mounting PCBs and assemblies
- optional infill covers close the underside opening and can be used for fitting additional PCBs or assemblies
- three point wall mounting system - no need to open the main electronics section, only the front lid has to be refitted after installation (version II already has openings in the bottom part)
- supplied with anti-tamper Torx T10 assembly screws
- NET-BOX cases can also be used as desktop units, accessory non-slip feet are available



# NET-BOX

## Applications and Examples

Building management, central control units, IoT/IloT, smart factory, industry 4.0, gateways, data acquisition systems, data systems engineering, measuring and control technology, supervision terminals and access control, medical and wellness technology, etc.



Esystop flow water stop system



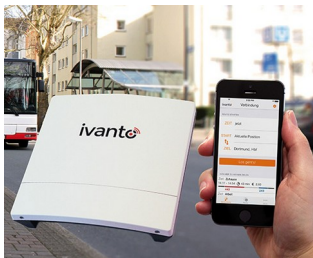
Gateway for the automation of production plants



Industrial Router



Intelligent Irrigation System



IT for urban mobility



Measuring station for stationary field measurements



Sauna control



Signal lamp



Telecommunications station for independent professionals

## Customising Options

What do you still need for your own very personal product? We can supply enclosures and tuning knobs with all necessary modifications for fitting your electronic components. Customising options for Net-Box

# NET-BOX



Machining



Lacquering



Printing



Laser marking



Special material



EMC shielding



Installation / Assembly  
of accessories

## Select Versions



**B3214101**  
NET-BOX 140, Vers. I  
ASA+PC (UL 94 V-0)  
light grey RAL 7035  
140x140x46.5mm  
IP 65 opt., IP 40



**B3214201**  
NET-BOX 140, Vers. II  
ASA+PC (UL 94 V-0)  
light grey RAL 7035  
140x140x46.5mm  
IP 65 opt.



**B3218101**  
NET-BOX 180, Vers. I  
ASA+PC (UL 94 V-0)  
light grey RAL 7035  
180x180x48.5mm  
IP 65 opt., IP 40



**B3218201**  
NET-BOX 180, Vers. II  
ASA+PC (UL 94 V-0)  
light grey RAL 7035  
180x180x48.5mm  
IP 65 opt.



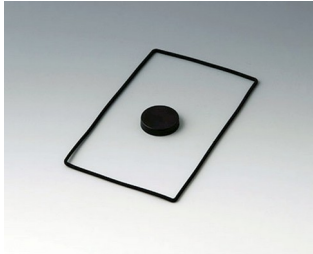
**B3222101**  
NET-BOX 220, Vers. I  
ASA+PC (UL 94 V-0)  
light grey RAL 7035  
220x220x50.5mm  
IP 65 opt., IP 40



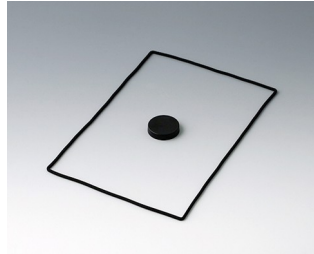
**B3222201**  
NET-BOX 220, Vers. II  
ASA+PC (UL 94 V-0)  
light grey RAL 7035  
220x220x50.5mm  
IP 65 opt.

# NET-BOX

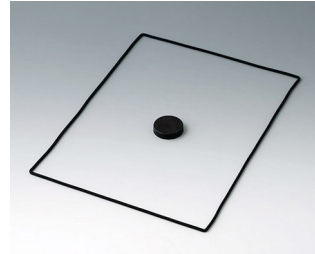
## Accessory "protection"



**B3314159**  
Sealing kit 140  
Silicone  
black



**B3318159**  
Sealing kit 180  
Silicone  
black



**B3322159**  
Sealing kit 220  
Silicone  
black

## Accessory "screws"

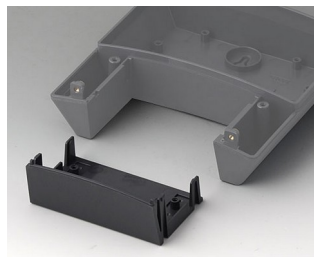


**A0306031**  
Self-tapping screws 3 x 6 mm  
(PZ1)

## Accessory



**A9207150**  
Anti-slide feet 6.5 x 2 mm  
transparent



**B3314918**  
Infill cover 140  
ASA+PC (UL 94 V-0)  
lava



**B3318918**  
Infill cover 180  
ASA+PC (UL 94 V-0)  
lava



**B3322918**  
Infill cover 220  
ASA+PC (UL 94 V-0)  
lava

Subject to technical modification without notice. © by OKW Gehäusesysteme, Buchen/Germany.