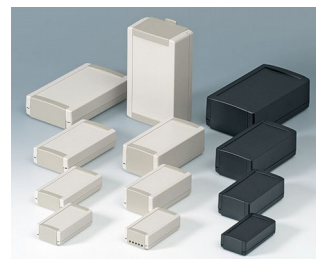


TOPTEC

Universal plastic enclosures

Our TOPTEC enclosures allow pre-assembled PCBs with protruding connectors and interfaces to be mounted directly into the case. It is no longer necessary to wire in the connectors after fitting the PCB into the enclosure - an excellent advantage.

- modern aesthetic design for indoor applications as desktop or wall mounted systems as well as DIN rail mounted devices
- simple and secure snap-together case assembly
- for security, a tool is required to open the case
- base part with lateral opening for quick and easy equipping from all sides
- clip-in end panels allow PCBs, pre-fitted with connectors, to fit straight in
- extensive range of 28 models
- type F with flat top moulding
- type H with high top moulding
- versions with or without ventilation slots
- ventilation slots can also be used for gas detection and sound
- discreet wall mounting facility; the hidden wall suspension element, with fast release tab, snaps into apertures on the underside of the base
- optional DIN rail mounting clip
- protection class IP 40
- recess in top for a membrane keypad or label
- internal screw pillars for PCBs etc.



TOPTEC

Applications and Examples

Universal enclosures for electronic and electro-technical devices. For example,

- Monitoring purposes as check instruments, signalling equipment and control systems
- Medical and wellness devices
- Laboratory technology
- Computer peripherals
- IoT/IIoT



Adaptive multicontroller for single sensors



IR-Controlbox



MPI adapter



PROFIBUS radio system

Customising Options

What do you still need for your own very personal product? We can supply enclosures and tuning knobs with all necessary modifications for fitting your electronic components.

Customising options for Topotec



Machining



Lacquering



Printing



Laser marking



Decor foils



Special material



EMC shielding



Installation / Assembly of accessories

TOPTEC

Select Versions



B1040365
TOPTEC 102, Vers. I
ABS (UL 94 HB)
off-white RAL 9002
102x54x30mm
IP 40



B1040369
TOPTEC 102, Vers. I
ABS (UL 94 HB)
black RAL 9005
102x54x30mm
IP 40



B1040465
TOPTEC 102, Vers. II
ABS (UL 94 HB)
off-white RAL 9002
102x54x30mm
IP 40



B1040469
TOPTEC 102, Vers. II
ABS (UL 94 HB)
black RAL 9005
102x54x30mm
IP 40



B1050365
TOPTEC 123 H, Vers. I
ABS (UL 94 HB)
off-white RAL 9002
123x68x45mm
IP 40



B1050369
TOPTEC 123 H, Vers. I
ABS (UL 94 HB)
black RAL 9005
123x68x45mm
IP 40



B1050465
TOPTEC 123 H, Vers. II
ABS (UL 94 HB)
off-white RAL 9002
123x68x45mm
IP 40



B1050469
TOPTEC 123 H, Vers. II
ABS (UL 94 HB)
black RAL 9005
123x68x45mm
IP 40



B1055365
TOPTEC 123 F, Vers. I
ABS (UL 94 HB)
off-white RAL 9002
123x68x30mm
IP 40



B1055369
TOPTEC 123 F, Vers. I
ABS (UL 94 HB)
black RAL 9005
123x68x30mm
IP 40



B1055465
TOPTEC 123 F, Vers. II
ABS (UL 94 HB)
off-white RAL 9002
123x68x30mm
IP 40



B1055469
TOPTEC 123 F, Vers. II
ABS (UL 94 HB)
black RAL 9005
123x68x30mm
IP 40



B1060365
TOPTEC 154 H, Vers. I
ABS (UL 94 HB)
off-white RAL 9002
154x84x56mm
IP 40



B1060369
TOPTEC 154 H, Vers. I
ABS (UL 94 HB)
black RAL 9005
154x84x56mm
IP 40



B1060465
TOPTEC 154 H, Vers. II
ABS (UL 94 HB)
off-white RAL 9002
154x84x56mm
IP 40



B1060469
TOPTEC 154 H, Vers. II
ABS (UL 94 HB)
black RAL 9005
154x84x56mm
IP 40

TOPTEC



B1065365
TOPTEC 154 F, Vers. I
ABS (UL 94 HB)
off-white RAL 9002
154x84x38mm
IP 40



B1065369
TOPTEC 154 F, Vers. I
ABS (UL 94 HB)
black RAL 9005
154x84x38mm
IP 40



B1065465
TOPTEC 154 F, Vers. II
ABS (UL 94 HB)
off-white RAL 9002
154x84x38mm
IP 40



B1065469
TOPTEC 154 F, Vers. II
ABS (UL 94 HB)
black RAL 9005
154x84x38mm
IP 40



B1070365
TOPTEC 194 H, Vers. I
ABS (UL 94 HB)
off-white RAL 9002
194x115x68mm
IP 40



B1070369
TOPTEC 194 H, Vers. I
ABS (UL 94 HB)
black RAL 9005
194x115x68mm
IP 40



B1070465
TOPTEC 194 H, Vers. II
ABS (UL 94 HB)
off-white RAL 9002
194x115x68mm
IP 40



B1070469
TOPTEC 194 H, Vers. II
ABS (UL 94 HB)
black RAL 9005
194x115x68mm
IP 40



B1075365
TOPTEC 194 F, Vers. I
ABS (UL 94 HB)
off-white RAL 9002
194x115x46mm
IP 40



B1075369
TOPTEC 194 F, Vers. I
ABS (UL 94 HB)
black RAL 9005
194x115x46mm
IP 40

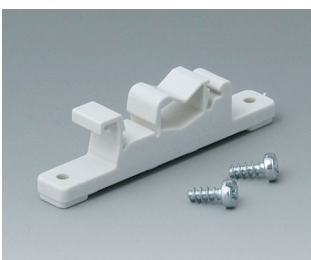


B1075465
TOPTEC 194 F, Vers. II
ABS (UL 94 HB)
off-white RAL 9002
194x115x46mm
IP 40



B1075469
TOPTEC 194 F, Vers. II
ABS (UL 94 HB)
black RAL 9005
194x115x46mm
IP 40

Accessory "wall/holder"



B1300017
Fastening element for DIN-Rails
PA 6
off-white RAL 9002



B1300019
Fastening element for DIN-Rails
PA 6
black RAL 9005

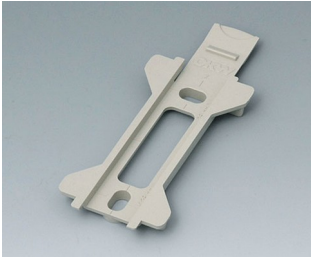


B1340028
Wall suspension element for
Topotec 102
PC+ABS (UL 94 V-0)
pebble grey RAL 7032



B1340029
Wall suspension element for
Topotec 102
ABS (UL 94 HB)
black RAL 9005

TOPTEC



B1350028
Wall suspension element for
Toptec 123
PC+ABS (UL 94 V-0)
pebble grey RAL 7032



B1350029
Wall suspension element for
Toptec 123
ABS (UL 94 HB)
black RAL 9005



B1360028
Wall suspension element for
Toptec 154
PC+ABS (UL 94 V-0)
pebble grey RAL 7032



B1360029
Wall suspension element for
Toptec 154
ABS (UL 94 HB)
black RAL 9005



B1370028
Wall suspension element for
Toptec 194
PC+ABS (UL 94 V-0)
pebble grey RAL 7032



B1370029
Wall suspension element for
Toptec 194
ABS (UL 94 HB)
black RAL 9005

Accessory "screws"



A0305031
Self-tapping screws 2.5 x 6 mm
(PZ1)



A9199008
Set of screws

Accessory



A9207150
Anti-slide feet 6.5 x 2 mm
transparent

Subject to technical modification without notice. © by OKW Gehäusesysteme, Buchen/Germany.