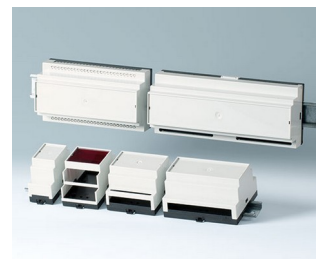


RAILTEC B

Versatile standard DIN rail enclosures

Our RAILTEC B series of plastic enclosures provides fast and simple mounting on to standard DIN EN 60715 TH35 rails.

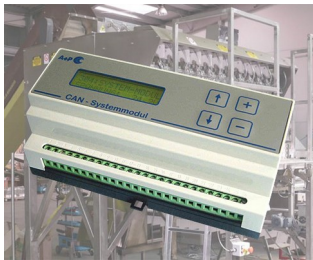
- six sizes (2 to 12 modules wide) according to DIN 43880, unit 1;
four sizes (2, 4, 6 & 9 modules wide) with low profile, 2 versions;
four sizes (2, 4, 6 & 9 modules wide) with flat/high connection level
- fully insulated and protected according to VBG 4 and IEC 529/DIN VDE 0470-1
- flame-resistant material (UL 94 V-0)
- **version I and XI:** for PCB terminal blocks 5.0/5.08 mm pitch
- **version II and XII:** for plug headers 5.0/5.08 mm pitch
- **version III and XIII:** closed case for front connectors, D-SUB connectors, etc.
- **version IV:** for PCB terminal blocks 5.0/5.08 mm pitch (1 row)
- **version V:** with knockout perforations 5.0 mm pitch
- **version VI:** open case for fitting different combinations of terminal guards and partition plate; optionally 1 or 2 connection levels
- KNX cover to fit 2 and 4 modules of series VI and flat top parts
- suitable for DIN rails EN 60715 TH35 or direct wall mounting
- with/without ventilation slots for good heat dissipation
- flexible assembly: PCB positioning in all 3 directions; base part with fixing pillars, top parts with guide ridges
- DIN rail clip pre-assembled in base part
- transparent lid (acc.) protects display and operation elements
- protection class < IP 40
- **NEW:** RAILTEC BP, M22 – Panel version with pluggable side panels and front panel. Simple and quick assembly and fast mounting onto DIN rails EN 60715 TH35. Optional hinged transparent cover (accessory).



RAILTEC B

Applications and Examples

Universal use as installation case. Corresponding to the regulations of the machine-building and motorcar industry. Smart Factory / Industry 4.0. Technical equipment for building automation and SMART-HOME. Especially for the control equipment for example lighting systems.



CAN BUS system module for packaging machines



Earthfault detection and short-circuit indicator



Energy management in data centres



Industrial Gateways



Industrial VDSL2/ADSL2 modems



Monitoring of electrical variables



Power measuring device for energy analysis



Remote meter for condition monitoring



Smart meter for electricity consumption



Water level detector

Customising Options

What do you still need for your own very personal product? We can supply enclosures and tuning knobs with all necessary modifications for fitting your electronic components. Customising options for Railtec B

RAILTEC B



Machining



Lacquering



Printing



Laser marking



Decor foils



Installation / Assembly
of accessories

Select Versions



B6501110
RAILTEC B, 2 modules, Vers. V
PC (UL 94 V-0)
light grey RAL 7035
35x86x58mm



B6501111
RAILTEC B, 2 modules, Vers. I
PC (UL 94 V-0)
light grey RAL 7035
35x86x58mm



B6501112
RAILTEC B, 2 modules, Vers. II
PC (UL 94 V-0)
light grey RAL 7035
35x86x58mm



B6501113
RAILTEC B, 2 modules, Vers. III
PC (UL 94 V-0)
light grey RAL 7035
35x86x58mm



B6501114
RAILTEC B, 2 modules, Vers. I
PC (UL 94 V-0)
light grey RAL 7035
35x86x58mm



B6501115
RAILTEC B, 2 modules, Vers. II
PC (UL 94 V-0)
light grey RAL 7035
35x86x58mm



B6501116
RAILTEC B, 2 modules, Vers. III
PC (UL 94 V-0)
light grey RAL 7035
35x86x58mm



B6501117
RAILTEC B, 2 modules, Vers. IV
PC (UL 94 V-0)
light grey RAL 7035
35x86x58mm

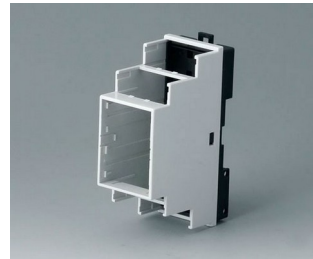
RAILTEC B



B6501118
RAILTEC B, 2 modules, Vers. IV
PC (UL 94 V-0)
light grey RAL 7035
35x86x58mm



B6501119
RAILTEC B, 2 modules, Vers. V
PC (UL 94 V-0)
light grey RAL 7035
35x86x58mm



B6501121
RAILTEC B, 2 modules, Vers. VI
PC (UL 94 V-0)
light grey RAL 7035
35x90x58mm



B6501223
RAILTEC B, 2 modules, Vers. III
low profile
PC (UL 94 V-0)
light grey RAL 7035
35x86x31.25mm



B6501229
RAILTEC B, 2 modules, Vers.
low profile
PC (UL 94 V-0)
light grey RAL 7035
35x89.6x31.25mm



B6502110
RAILTEC B, 3 modules, Vers. V
PC (UL 94 V-0)
light grey RAL 7035
52.5x86x58mm



B6502111
RAILTEC B, 3 modules, Vers. I
PC (UL 94 V-0)
light grey RAL 7035
52.5x86x58mm



B6502112
RAILTEC B, 3 modules, Vers. II
PC (UL 94 V-0)
light grey RAL 7035
52.5x86x58mm



B6502113
RAILTEC B, 3 modules, Vers. III
PC (UL 94 V-0)
light grey RAL 7035
52.5x86x58mm



B6502114
RAILTEC B, 3 modules, Vers. I
PC (UL 94 V-0)
light grey RAL 7035
52.5x86x58mm



B6502115
RAILTEC B, 3 modules, Vers. II
PC (UL 94 V-0)
light grey RAL 7035
52.5x86x58mm



B6502116
RAILTEC B, 3 modules, Vers. III
PC (UL 94 V-0)
light grey RAL 7035
52.5x86x58mm



B6502117
RAILTEC B, 3 modules, Vers. IV
PC (UL 94 V-0)
light grey RAL 7035
52.5x86x58mm



B6502118
RAILTEC B, 3 modules, Vers. IV
PC (UL 94 V-0)
light grey RAL 7035
52.5x86x58mm



B6502119
RAILTEC B, 3 modules, Vers. V
PC (UL 94 V-0)
light grey RAL 7035
52.5x86x58mm



B6502121
RAILTEC B, 3 modules, Vers. VI
PC (UL 94 V-0)
light grey RAL 7035
52.5x90x58mm

RAILTEC B



B6503110
RAILTEC B, 4 modules, Vers. V
PC (UL 94 V-0)
light grey RAL 7035
70x86x58mm



B6503111
RAILTEC B, 4 modules, Vers. I
PC (UL 94 V-0)
light grey RAL 7035
70x86x58mm



B6503112
RAILTEC B, 4 modules, Vers. II
PC (UL 94 V-0)
light grey RAL 7035
70x86x58mm



B6503113
RAILTEC B, 4 modules, Vers. III
PC (UL 94 V-0)
light grey RAL 7035
70x86x58mm



B6503114
RAILTEC B, 4 modules, Vers. I
PC (UL 94 V-0)
light grey RAL 7035
70x86x58mm



B6503115
RAILTEC B, 4 modules, Vers. II
PC (UL 94 V-0)
light grey RAL 7035
70x86x58mm



B6503116
RAILTEC B, 4 modules, Vers. III
PC (UL 94 V-0)
light grey RAL 7035
70x86x58mm



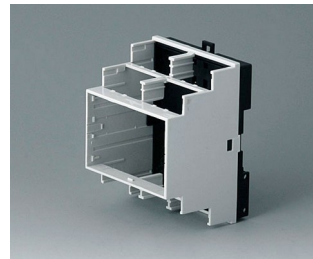
B6503117
RAILTEC B, 4 modules, Vers. IV
PC (UL 94 V-0)
light grey RAL 7035
70x86x58mm



B6503118
RAILTEC B, 4 modules, Vers. IV
PC (UL 94 V-0)
light grey RAL 7035
70x86x58mm



B6503119
RAILTEC B, 4 modules, Vers. V
PC (UL 94 V-0)
light grey RAL 7035
70x86x58mm



B6503121
RAILTEC B, 4 modules, Vers. VI
PC (UL 94 V-0)
light grey RAL 7035
70x90x58mm



B6503223
RAILTEC B, 4 modules, Vers. III
low profile
PC (UL 94 V-0)
light grey RAL 7035
70x86x31.25mm



B6503229
RAILTEC B, 4 modules, Vers.
low profile
PC (UL 94 V-0)
light grey RAL 7035
70x89.6x31.25mm



B6504110
RAILTEC B, 6 modules, Vers. V
PC (UL 94 V-0)
light grey RAL 7035
105x86x59mm



B6504111
RAILTEC B, 6 modules, Vers. I
PC (UL 94 V-0)
light grey RAL 7035
105x86x59mm



B6504112
RAILTEC B, 6 modules, Vers. II
PC (UL 94 V-0)
light grey RAL 7035
105x86x59mm

RAILTEC B



B6504113
RAILTEC B, 6 modules, Vers. III
PC (UL 94 V-0)
light grey RAL 7035
105x86x59mm



B6504114
RAILTEC B, 6 modules, Vers. I
PC (UL 94 V-0)
light grey RAL 7035
105x86x59mm



B6504115
RAILTEC B, 6 modules, Vers. II
PC (UL 94 V-0)
light grey RAL 7035
105x86x59mm



B6504116
RAILTEC B, 6 modules, Vers. III
PC (UL 94 V-0)
light grey RAL 7035
105x86x59mm



B6504117
RAILTEC B, 6 modules, Vers. IV
PC (UL 94 V-0)
light grey RAL 7035
105x86x59mm



B6504118
RAILTEC B, 6 modules, Vers. IV
PC (UL 94 V-0)
light grey RAL 7035
105x86x59mm



B6504119
RAILTEC B, 6 modules, Vers. V
PC (UL 94 V-0)
light grey RAL 7035
105x86x59mm



B6504121
RAILTEC B, 6 modules, Vers. VI
PC (UL 94 V-0)
light grey RAL 7035
105x90x58mm



B6504223
RAILTEC B, 6 modules, Vers. III
low profile
PC (UL 94 V-0)
light grey RAL 7035
105x86x31.25mm



B6504229
RAILTEC B, 6 modules, Vers.
low profile
PC (UL 94 V-0)
light grey RAL 7035
105x89.6x31.25mm



B6505110
RAILTEC B, 9 modules, Vers. V
PC (UL 94 V-0)
light grey RAL 7035
157x86x59mm



B6505111
RAILTEC B, 9 modules, Vers. I
PC (UL 94 V-0)
light grey RAL 7035
157x86x59mm



B6505112
RAILTEC B, 9 modules, Vers. II
PC (UL 94 V-0)
light grey RAL 7035
157x86x59mm



B6505113
RAILTEC B, 9 modules, Vers. III
PC (UL 94 V-0)
light grey RAL 7035
157x86x59mm



B6505114
RAILTEC B, 9 modules, Vers. I
PC (UL 94 V-0)
light grey RAL 7035
157x86x59mm



B6505115
RAILTEC B, 9 modules, Vers. II
PC (UL 94 V-0)
light grey RAL 7035
157x86x59mm

RAILTEC B



B6505116
RAILTEC B, 9 modules, Vers. III
PC (UL 94 V-0)
light grey RAL 7035
157x86x59mm



B6505117
RAILTEC B, 9 modules, Vers. IV
PC (UL 94 V-0)
light grey RAL 7035
157x86x59mm



B6505118
RAILTEC B, 9 modules, Vers. IV
PC (UL 94 V-0)
light grey RAL 7035
157x86x59mm



B6505119
RAILTEC B, 9 modules, Vers. V
PC (UL 94 V-0)
light grey RAL 7035
157x86x59mm



B6505121
RAILTEC B, 9 modules, Vers. VI
PC (UL 94 V-0)
light grey RAL 7035
157x90x58mm



B6505223
RAILTEC B, 9 modules, Vers. III
low profile
PC (UL 94 V-0)
light grey RAL 7035
157x86x31.25mm



B6505229
RAILTEC B, 9 modules, Vers.
low profile
PC (UL 94 V-0)
light grey RAL 7035
157.5x89.6x31.25mm



B6506110
RAILTEC B, 12 modules, Vers. V
PC (UL 94 V-0)
light grey RAL 7035
210x90x58mm



B6506111
RAILTEC B, 12 modules, Vers. I
PC (UL 94 V-0)
light grey RAL 7035
210x90x58mm



B6506112
RAILTEC B, 12 modules, Vers. II
PC (UL 94 V-0)
light grey RAL 7035
210x90x58mm



B6506113
RAILTEC B, 12 modules, Vers.
III
PC (UL 94 V-0)
light grey RAL 7035
210x90x58mm



B6506114
RAILTEC B, 12 modules, Vers. I
PC (UL 94 V-0)
light grey RAL 7035
210x90x58mm



B6506115
RAILTEC B, 12 modules, Vers. II
PC (UL 94 V-0)
light grey RAL 7035
210x90x58mm



B6506116
RAILTEC B, 12 modules, Vers.
III
PC (UL 94 V-0)
light grey RAL 7035
210x90x58mm



B6506117
RAILTEC B, 12 modules, Vers.
IV
PC (UL 94 V-0)
light grey RAL 7035
210x90x58mm



B6506118
RAILTEC B, 12 modules, Vers.
IV
PC (UL 94 V-0)
light grey RAL 7035
210x90x58mm

RAILTEC B



B6506119
RAILTEC B, 12 modules, Vers. V
PC (UL 94 V-0)
light grey RAL 7035
210x90x58mm



B6506121
RAILTEC B, 12 modules, Vers. VI
PC (UL 94 V-0)
light grey RAL 7035
210x90x58mm



B6511111
RAILTEC B, 2 modules, Vers. XI
PC (UL 94 V-0)
light grey RAL 7035
35x86x58mm



B6511112
RAILTEC B, 2 modules, Vers. XII
PC (UL 94 V-0)
light grey RAL 7035
35x86x58mm



B6511113
RAILTEC B, 2 modules, Vers. XIII
PC (UL 94 V-0)
light grey RAL 7035
35x86x58mm



B6513111
RAILTEC B, 4 modules, Vers. XI
PC (UL 94 V-0)
light grey RAL 7035
70x86x58mm



B6513112
RAILTEC B, 4 modules, Vers. XII
PC (UL 94 V-0)
light grey RAL 7035
70x86x58mm



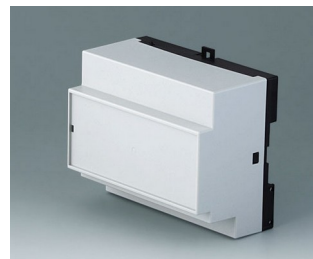
B6513113
RAILTEC B, 4 modules, Vers. XIII
PC (UL 94 V-0)
light grey RAL 7035
70x86x58mm



B6514111
RAILTEC B, 6 modules, Vers. XI
PC (UL 94 V-0)
light grey RAL 7035
105x86x59mm



B6514112
RAILTEC B, 6 modules, Vers. XII
PC (UL 94 V-0)
light grey RAL 7035
105x86x59mm



B6514113
RAILTEC B, 6 modules, Vers. XIII
PC (UL 94 V-0)
light grey RAL 7035
105x86x59mm



B6515111
RAILTEC B, 9 modules, Vers. XI
PC (UL 94 V-0)
light grey RAL 7035
157x86x59mm



B6515112
RAILTEC B, 9 modules, Vers. XII
PC (UL 94 V-0)
light grey RAL 7035
157x86x59mm



B6515113
RAILTEC B, 9 modules, Vers. XIII
PC (UL 94 V-0)
light grey RAL 7035
157x86x59mm



B6522101
RAILTEC BP, M22, with closed
side panels
PC (UL 94 V-0)
light grey RAL 7035
95x23x113mm



B6522102
RAILTEC BP, M22, closed/with
ventilation slots
PC (UL 94 V-0)
light grey RAL 7035
95x23x113mm

RAILTEC B



B6522103
 RAILTEC BP, M22, with
 ventilation slots
 PC (UL 94 V-0)
 light grey RAL 7035
 95x23x113mm

Accessory "protection"



B6622101
 Hinged cover
 transparent

Accessory "wall/holder"



B6600334
 Wall suspension elements
 PPO (UL 94 V-0)
 black

Accessory "terminals"



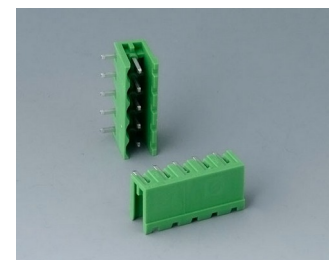
B6600111
 Terminal block, block 5.0
 PA 68 (UL 94 V-0)
 light grey



B6600222
 Plug header, block 5.08
 PA 68 (UL 94 V-0)



B6601111
 Terminal block, block 5.0
 PA 68 (UL 94 V-0)

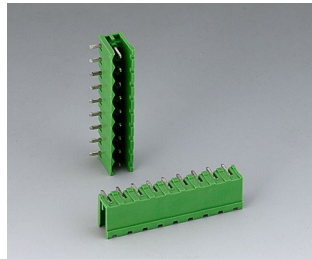


B6601222
 Plug header, block 5.08
 PA 6 (UL 94 V-0)

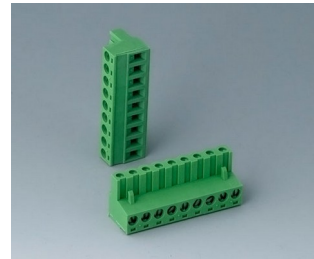
RAILTEC B



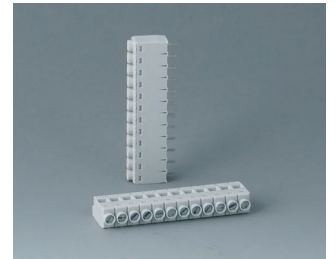
B6601223
Plug header, block 5.08
PA 6 (UL 94 V-0)



B6602222
Plug header, block 5.08
PA 6 (UL 94 V-0)



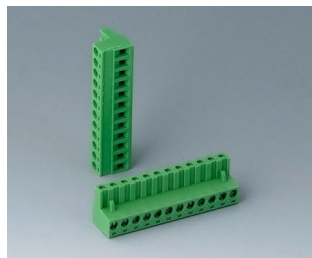
B6602223
Plug header, block 5.08
PA 6 (UL 94 V-0)



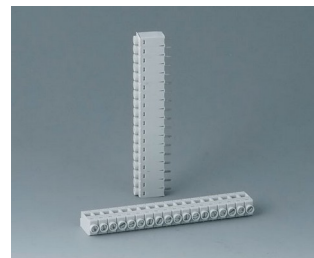
B6603111
Terminal block, block 5.0
PA 68 (UL 94 V-0)



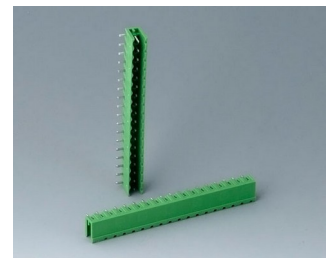
B6603222
Plug header, block 5.08
PA 6 (UL 94 V-0)



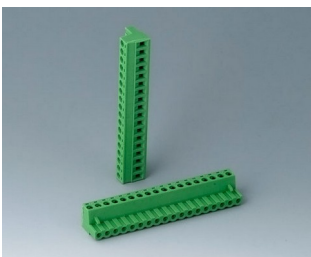
B6603223
Plug header, block 5.08
PA 6 (UL 94 V-0)



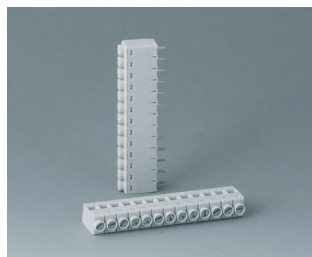
B6604111
Terminal block, block 5.0
PA 68 (UL 94 V-0)



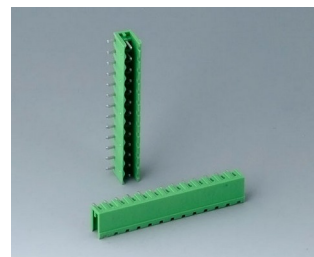
B6604222
Plug header, block 5.08
PA 68 (UL 94 V-0)



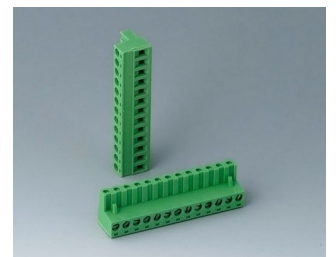
B6604223
Plug header, block 5.08
PA 68 (UL 94 V-0)



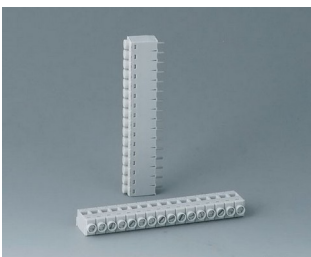
B6605111
Terminal block, block 5.0
PA 68 (UL 94 V-0)



B6605222
Plug header, block 5.08
PA 6 (UL 94 V-0)



B6605223
Plug header, block 5.08
PA 6 (UL 94 V-0)



B6606111
Terminal block, block 5.0
PA 68 (UL 94 V-0)



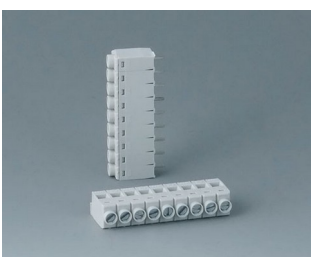
B6606222
Plug header, block 5.08
PA 6 (UL 94 V-0)



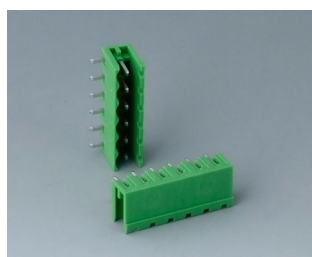
B6606223
Plug header, block 5.08
PA 6 (UL 94 V-0)



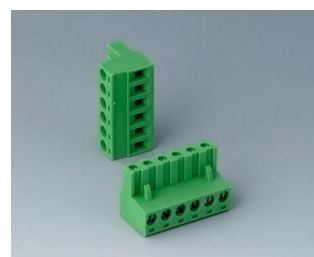
B6607111
Terminal block, block 5.0
PA 68 (UL 94 V-0)



B6608111
Terminal block, block 5.0
PA 68 (UL 94 V-0)



B6608222
Plug header, block 5.08
PA 68 (UL 94 V-0)



B6608223
Plug header, block 5.08
PA 68 (UL 94 V-0)

RAILTEC B

Accessory "terminal guards"



B6607140
Terminal guards, flat
PC (UL 94 V-0)
light grey



B6607141
Terminal guards, flat
PC (UL 94 V-0)
light grey



B6607142
Terminal guards, flat
PC (UL 94 V-0)
light grey



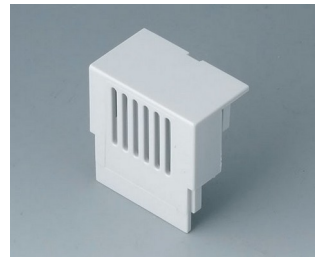
B6607143
Terminal guards, flat
PC (UL 94 V-0)
light grey



B6607145
KNX Cover, flat
PC (UL 94 V-0)
light grey



B6607160
Terminal guards, high
PC (UL 94 V-0)
light grey



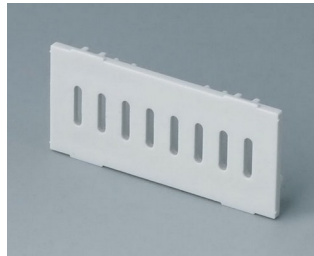
B6607161
Terminal guards, high
PC (UL 94 V-0)
light grey



B6607162
Terminal guards, high
PC (UL 94 V-0)
light grey



B6607163
Terminal guards, high
PC (UL 94 V-0)
light grey



B6607191
Partition plate
PC (UL 94 V-0)
light grey



B6608140
Terminal guards, flat
PC (UL 94 V-0)
light grey



B6608141
Terminal guards, flat
PC (UL 94 V-0)
light grey



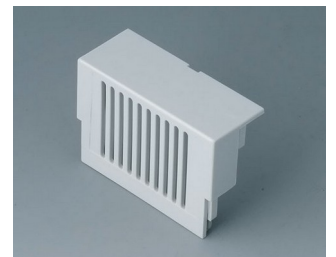
B6608142
Terminal guards, flat
PC (UL 94 V-0)
light grey



B6608143
Terminal guards, flat
PC (UL 94 V-0)
light grey



B6608160
Terminal guards, high
PC (UL 94 V-0)
light grey



B6608161
Terminal guards, high
PC (UL 94 V-0)
light grey

RAILTEC B



B6608162
Terminal guards, high
PC (UL 94 V-0)
light grey



B6608163
Terminal guards, high
PC (UL 94 V-0)
light grey



B6608191
Partition plate
PC (UL 94 V-0)
light grey

Accessory "screws"



A0305031
Self-tapping screws 2.5 x 6 mm
(PZ1)

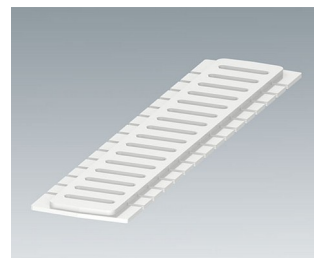
Accessory



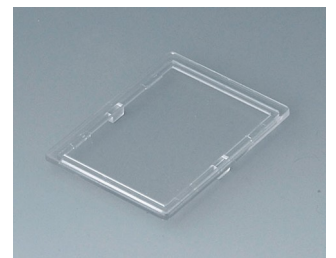
B6522801
Front panel
PC (UL 94 V-0)
light grey RAL 7035



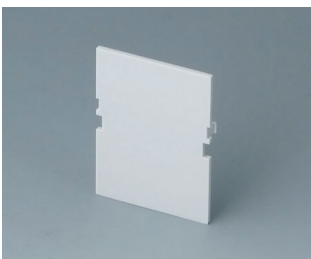
B6522811
Side panel closed
PC (UL 94 V-0)
light grey RAL 7035



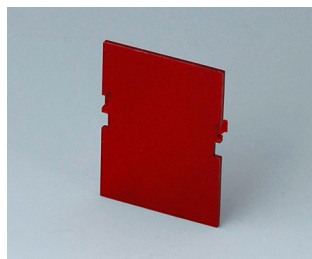
B6522821
Side panel with ventilation slots
PC (UL 94 V-0)
light grey RAL 7035



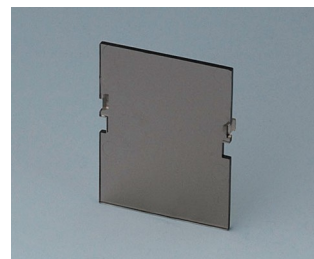
B6601100
Lid, 2 modules
PC (UL 94 V-0)
transparent



B6601180
Front panel, 2 modules, Vers. VI
PC (UL 94 V-0)
light grey
32x42mm



B6601480
Front panel, 2 modules, Vers. VI
PC (UL 94 V-0)
red transparent
32x42mm

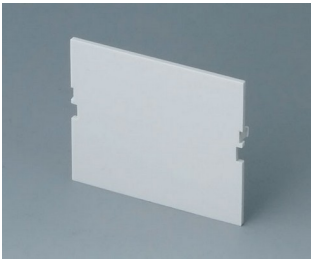


B6601580
Front panel, 2 modules, Vers. VI
PC (UL 94 V-0)
smoked glass
32x42mm

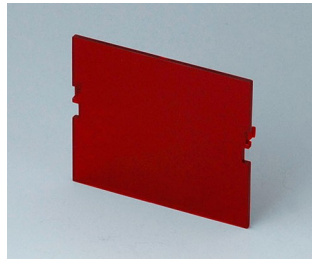


B6602100
Lid, 3 modules
PC (UL 94 V-0)
transparent

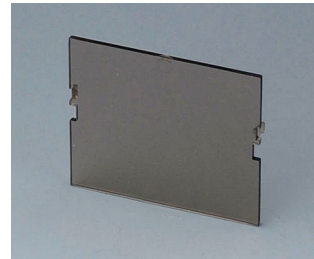
RAILTEC B



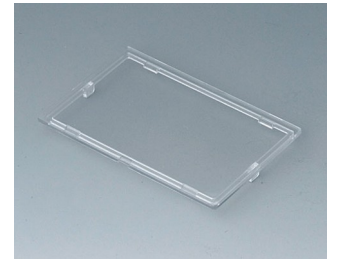
B6602180
Front panel, 3 modules, Vers. VI
PC (UL 94 V-0)
light grey
49x42mm



B6602480
Front panel, 3 modules, Vers. VI
PC (UL 94 V-0)
red transparent
49x42mm



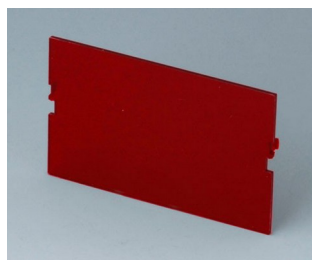
B6602580
Front panel, 3 modules, Vers. VI
PC (UL 94 V-0)
smoked glass
42x49mm



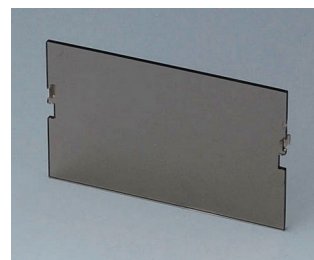
B6603100
Lid, 4 modules
PC (UL 94 V-0)
transparent



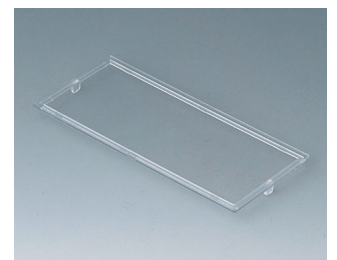
B6603180
Front panel, 4 modules, Vers. VI
PC (UL 94 V-0)
light grey
67x42mm



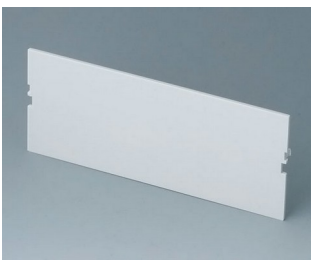
B6603480
Front panel, 4 modules, Vers. VI
PC (UL 94 V-0)
red transparent
67x42mm



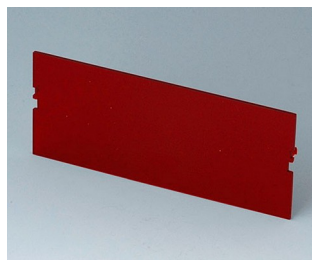
B6603580
Front panel, 4 modules, Vers. VI
PC (UL 94 V-0)
smoked glass
67x42mm



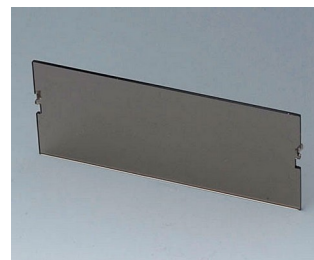
B6604100
Lid, 6 modules
PC (UL 94 V-0)
transparent



B6604180
Front panel, 6 modules, Vers. VI
PC (UL 94 V-0)
light grey
102x42mm



B6604480
Front panel, 6 modules, Vers. VI
PC (UL 94 V-0)
red transparent
102x42mm



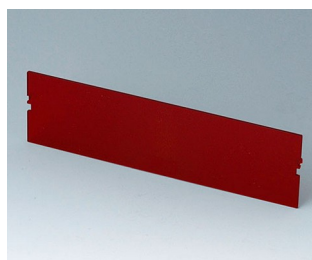
B6604580
Front panel, 6 modules, Vers. VI
PC (UL 94 V-0)
smoked glass
102x42mm



B6605100
Lid, 9 modules
PC (UL 94 V-0)
transparent



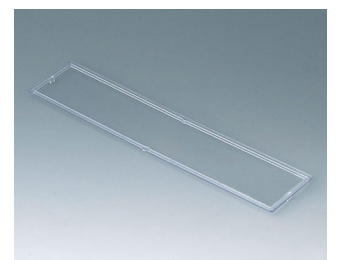
B6605180
Front panel, 9 modules, Vers. VI
PC (UL 94 V-0)
light grey
155x42mm



B6605480
Front panel, 9 modules, Vers. VI
PC (UL 94 V-0)
red transparent
155x42mm



B6605580
Front panel, 9 modules, Vers. VI
PC (UL 94 V-0)
smoked glass
155x42mm



B6606100
Lid, 12 modules
PC (UL 94 V-0)
transparent

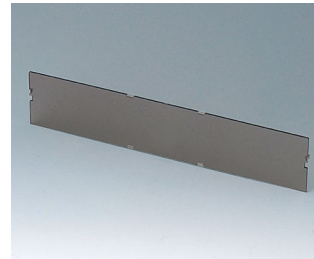
RAILTEC B



B6606180
Front panel, 12 modules, Vers.
VI
PC (UL 94 V-0)
light grey
206x42mm



B6606480
Front panel, 12 modules, Vers.
VI
PC (UL 94 V-0)
red transparent
206x42mm



B6606580
Front panel, 12 modules, Vers.
VI
PC (UL 94 V-0)
smoked glass
206x42mm

Subject to technical modification without notice. © by OKW Gehäusesysteme, Buchen/Germany.