

RAILTEC C

Modular DIN rail enclosures and open PCB holders

Extensive range of DIN rail plastic enclosures for mounting to standard DIN EN 60715 rails, or for panel mounting. Also, open DIN rail PCB supports/holders for individual component mounting and simple replacement of the interfaces.

- all types designed for fast installation of PCBs and terminals
- outstanding material properties for tough conditions, with high temperature stability (UL 94 V-0)
- easy and fast assembly with snap-in installation of the enclosure parts
- **RAILTEC C:** for PCB terminal blocks, plug headers and front connectors; optional frame for additional PCB position; front panels and lids in different versions; 1 to 12 module widths; for DIN rails EN 60715 TH35; PCB positioning in all 3 directions; adapter for TH15 and G32 rails (1 to 4 module models) as accessory
 - Version I front open, connection side with free through passage, without ventilation slots
 - Version II front open, connection side with free through passage, with ventilation slots
 - Version III front open, connection side with extended case wall, without ventilation slots
 - Version IV front closed, connection side with free through passage, without ventilation slots
- **RAILTEC SUPPORT:** PCB holder for DIN rail mounting; modular design for individual component mounting; for DIN rails EN 60715 TH35, TH15 and G32
- protection class < IP 40



Customising Options

RAILTEC C

What do you still need for your own very personal product? We can supply enclosures and tuning knobs with all necessary modifications for fitting your electronic components.
Customising options for Railtec C



Machining



Lacquering



Printing



Laser marking



Decor foils



Installation / Assembly
of accessories

Select Versions



B6700100
RAILTEC C, 1 module, Vers. I
PC (UL 94 V-0)
light grey
17.5x90x58mm



B6700102
RAILTEC C, 1 module, Vers. II
PC (UL 94 V-0)
light grey
17.5x90x58mm



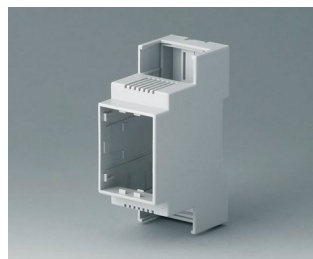
B6700104
RAILTEC C, 1 module, Vers. III
PC (UL 94 V-0)
light grey
17.5x90x58mm



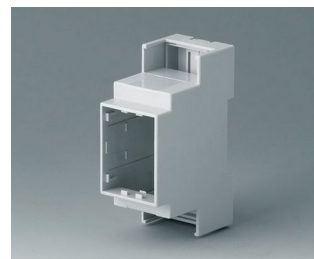
B6700106
RAILTEC C, 1 module, Vers. IV
PC (UL 94 V-0)
light grey
17.5x90x58mm



B6701100
RAILTEC C, 2 modules, Vers. I
PC (UL 94 V-0)
light grey
36x90x58mm



B6701102
RAILTEC C, 2 modules, Vers. II
PC (UL 94 V-0)
light grey
36x90x58mm

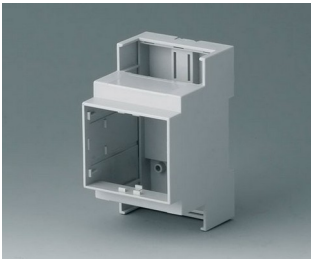


B6701104
RAILTEC C, 2 modules, Vers. III
PC (UL 94 V-0)
light grey
36x90x58mm

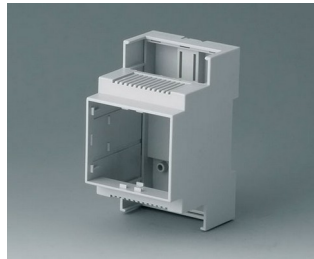


B6701106
RAILTEC C, 2 modules, Vers. IV
PC (UL 94 V-0)
light grey
36x90x58mm

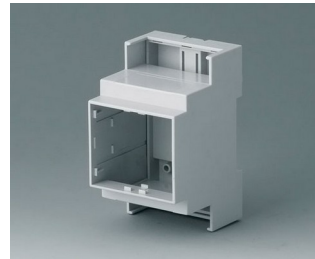
RAILTEC C



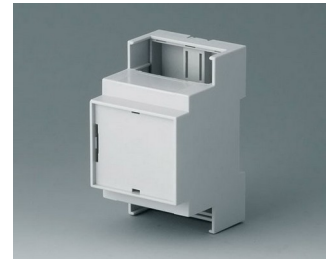
B6702100
RAILTEC C, 3 modules, Vers. I
PC (UL 94 V-0)
light grey
53x90x58mm



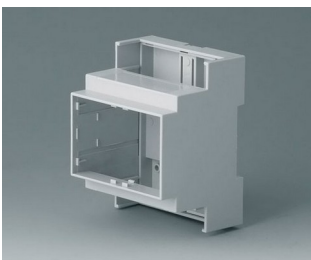
B6702102
RAILTEC C, 3 modules, Vers. II
PC (UL 94 V-0)
light grey
53x90x58mm



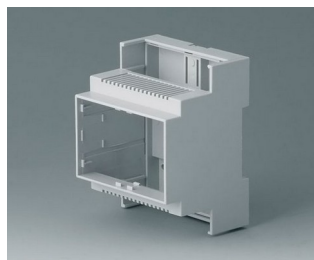
B6702104
RAILTEC C, 3 modules, Vers. III
PC (UL 94 V-0)
light grey
53x90x58mm



B6702106
RAILTEC C, 3 modules, Vers. IV
PC (UL 94 V-0)
light grey
53x90x58mm



B6703100
RAILTEC C, 4 modules, Vers. I
PC (UL 94 V-0)
light grey
71x90x58mm



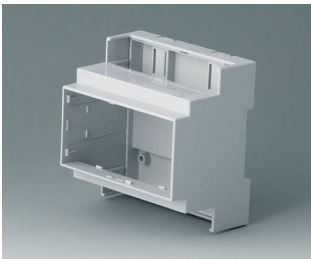
B6703102
RAILTEC C, 4 modules, Vers. II
PC (UL 94 V-0)
light grey
71x90x58mm



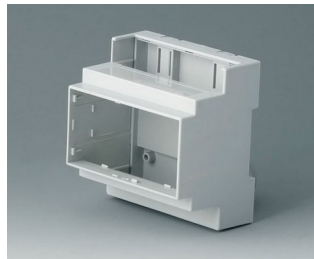
B6703104
RAILTEC C, 4 modules, Vers. III
PC (UL 94 V-0)
light grey
71x90x58mm



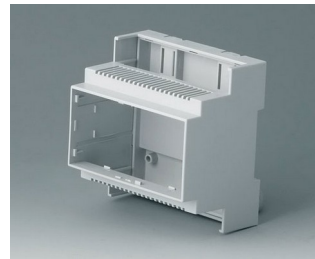
B6703106
RAILTEC C, 4 modules, Vers. IV
PC (UL 94 V-0)
light grey
71x90x58mm



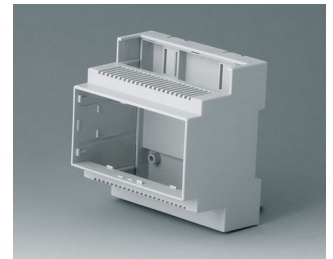
B6704100
RAILTEC C, 5 modules, Vers. I
PC (UL 94 V-0)
light grey
88x90x58mm



B6704101
RAILTEC C, 5 modules, Vers. I
PC (UL 94 V-0)
light grey
88x90x58mm



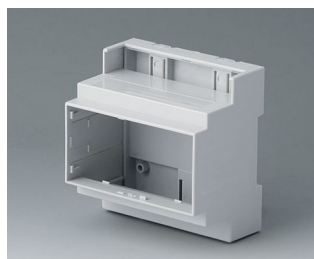
B6704102
RAILTEC C, 5 modules, Vers. II
PC (UL 94 V-0)
light grey
88x90x58mm



B6704103
RAILTEC C, 5 modules, Vers. II
PC (UL 94 V-0)
light grey
88x90x58mm



B6704104
RAILTEC C, 5 modules, Vers. III
PC (UL 94 V-0)
light grey
88x90x58mm



B6704105
RAILTEC C, 5 modules, Vers. III
PC (UL 94 V-0)
light grey
88x90x58mm

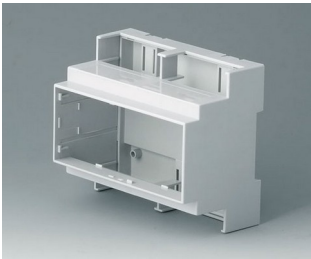


B6704106
RAILTEC C, 5 modules, Vers. IV
PC (UL 94 V-0)
light grey
88x90x58mm

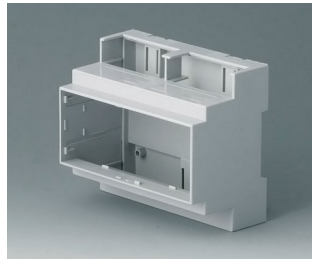


B6704107
RAILTEC C, 5 modules, Vers. IV
PC (UL 94 V-0)
light grey
88x90x58mm

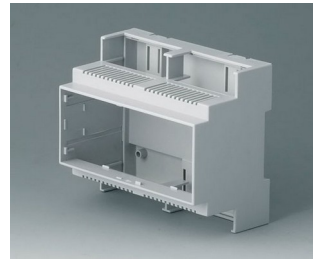
RAILTEC C



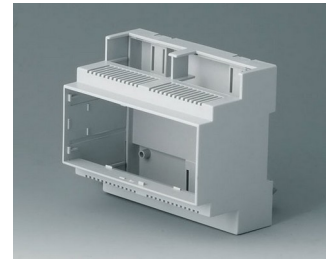
B6705100
 RAILTEC C, 6 modules, Vers. I
 PC (UL 94 V-0)
 light grey
 106x90x58mm



B6705101
 RAILTEC C, 6 modules, Vers. I
 PC (UL 94 V-0)
 light grey
 106x90x58mm



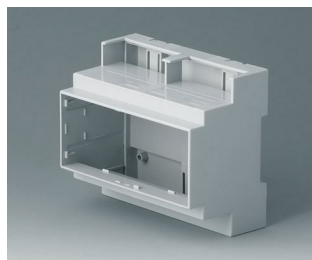
B6705102
 RAILTEC C, 6 modules, Vers. II
 PC (UL 94 V-0)
 light grey
 106x90x58mm



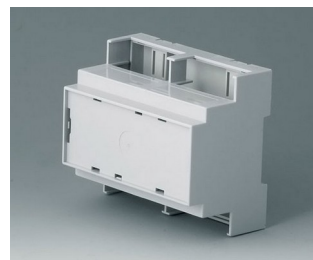
B6705103
 RAILTEC C, 6 modules, Vers. II
 PC (UL 94 V-0)
 light grey
 106x90x58mm



B6705104
 RAILTEC C, 6 modules, Vers. III
 PC (UL 94 V-0)
 light grey
 106x90x58mm



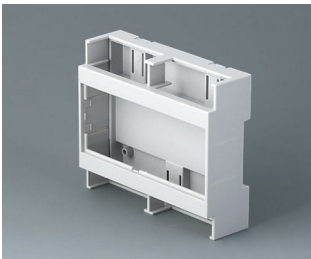
B6705105
 RAILTEC C, 6 modules, Vers. III
 PC (UL 94 V-0)
 light grey
 106x90x58mm



B6705106
 RAILTEC C, 6 modules, Vers. IV
 PC (UL 94 V-0)
 light grey
 106x90x58mm



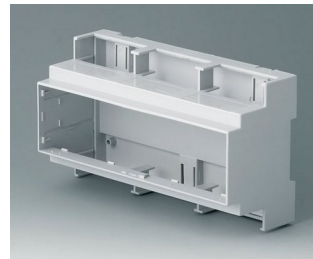
B6705107
 RAILTEC C, 6 modules, Vers. IV
 PC (UL 94 V-0)
 light grey
 106x90x58mm



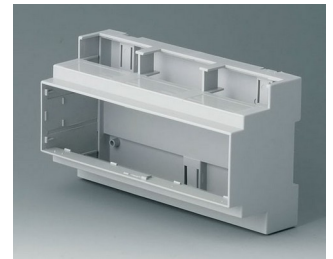
B6705800
 RAILTEC C, 6 modules, flat,
 Vers. I
 PC (UL 94 V-0)
 light grey
 106.2x90x32mm



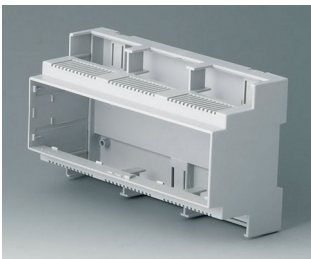
B6705806
 RAILTEC C, 6 modules, flat,
 Vers. IV
 PC (UL 94 V-0)
 light grey
 106.2x90x32mm



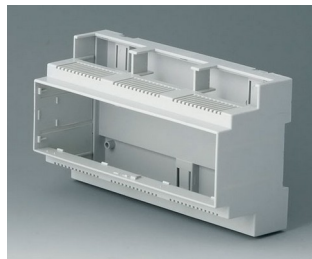
B6706100
 RAILTEC C, 9 modules, Vers. I
 PC (UL 94 V-0)
 light grey
 160x90x58mm



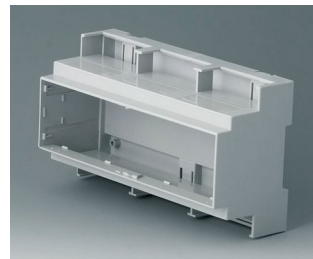
B6706101
 RAILTEC C, 9 modules, Vers. I
 PC (UL 94 V-0)
 light grey
 160x90x58mm



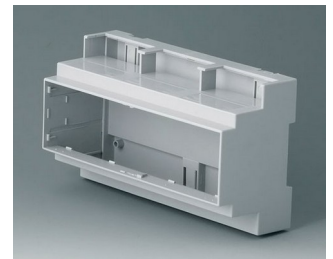
B6706102
 RAILTEC C, 9 modules, Vers. II
 PC (UL 94 V-0)
 light grey
 160x90x58mm



B6706103
 RAILTEC C, 9 modules, Vers. II
 PC (UL 94 V-0)
 light grey
 160x90x58mm

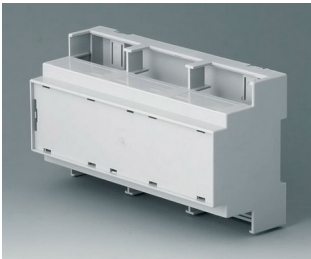


B6706104
 RAILTEC C, 9 modules, Vers. III
 PC (UL 94 V-0)
 light grey
 160x90x58mm

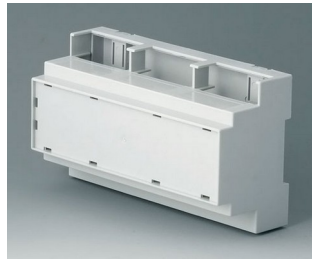


B6706105
 RAILTEC C, 9 modules, Vers. III
 PC (UL 94 V-0)
 light grey
 160x90x58mm

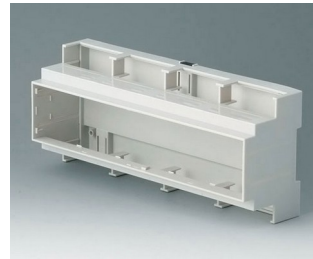
RAILTEC C



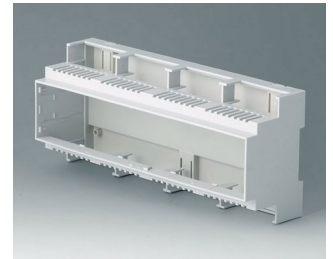
B6706106
RAILTEC C, 9 modules, Vers. IV
PC (UL 94 V-0)
light grey
160x90x58mm



B6706107
RAILTEC C, 9 modules, Vers. IV
PC (UL 94 V-0)
light grey
160x90x58mm



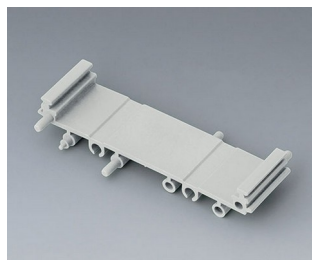
B6707100
RAILTEC C, 12 modules, Vers. I
PC (UL 94 V-0)
light grey
210x90x58mm



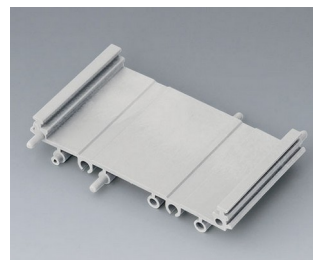
B6707102
RAILTEC C, 12 modules, Vers. II
PC (UL 94 V-0)
light grey
210x90x58mm



B6724330
RAILTEC SUP. 72, intermediate
part
PA 6 (30) (UL 94 V-0)
light grey
82x11.25x16mm



B6724331
RAILTEC SUP. 72, intermediate
part
PA 6 (30) (UL 94 V-0)
light grey
82x22.5x16mm



B6724332
RAILTEC SUP. 72, intermediate
part
PA 6 (30) (UL 94 V-0)
light grey
82x45x16mm



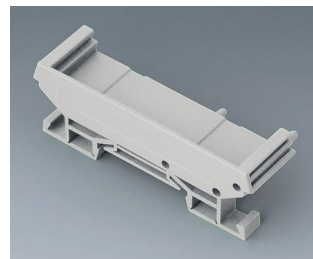
B6724333
RAILTEC SUP. 72, end section
PA 6 (30) (UL 94 V-0)
light grey
82x11.2x16mm



B6724334
RAILTEC SUP. 72, end section
PA 6 (30) (UL 94 V-0)
light grey
82x22.2x16mm



B6724335
RAILTEC SUP. 72, end section
with foot
PA 6 (30) (UL 94 V-0)
light grey
82x11.2x22.5mm



B6724336
RAILTEC SUP. 72, end section
with foot
PA 6 (30) (UL 94 V-0)
light grey
82x22.2x22.5mm



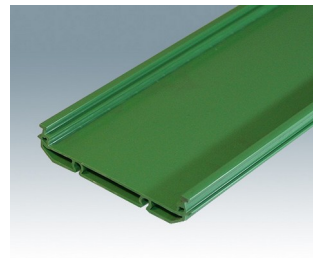
B6724444
RAILTEC SUP. 107, end section
PA 6 (30) (UL 94 V-0)
light grey
118x11.5x17.5mm



B6724445
RAILTEC SUP. 107, end section
with foot
PA 6 (30) (UL 94 V-0)
light grey
118x11.5x27.5mm



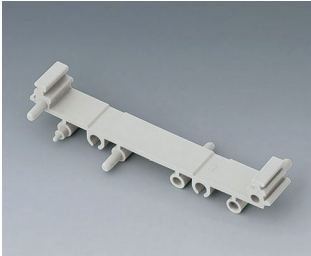
CIME/E/BExxx
RAILTEC SUP. EXT 107, base
section
PVC (UL 94 V-0)
green
117x18mm



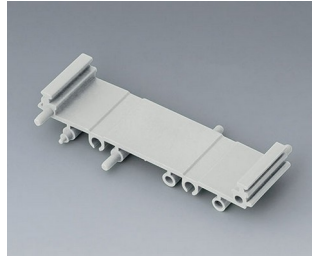
CIME/M/BExxx
RAILTEC SUP. EXT 72, base
section
PVC (UL 94 V-0)
green
80x16mm

RAILTEC C

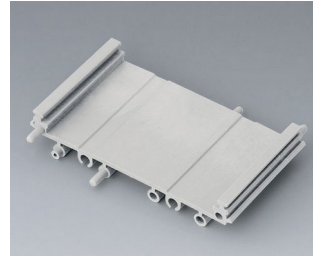
System components to complete



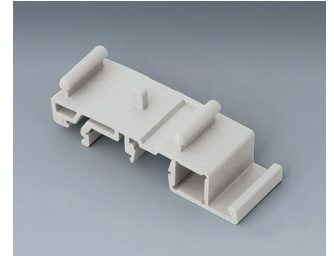
B6724330
RAILTEC SUP. 72, intermediate part
PA 6 (30) (UL 94 V-0)
light grey
82x11.25x16mm



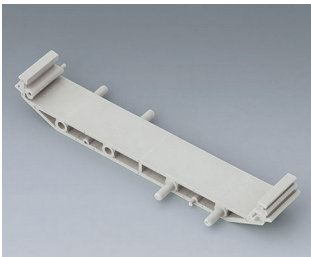
B6724331
RAILTEC SUP. 72, intermediate part
PA 6 (30) (UL 94 V-0)
light grey
82x22.5x16mm



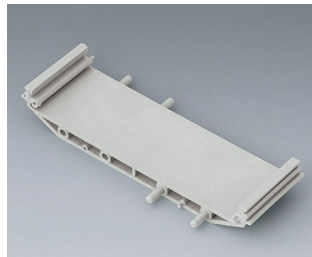
B6724332
RAILTEC SUP. 72, intermediate part
PA 6 (30) (UL 94 V-0)
light grey
82x45x16mm



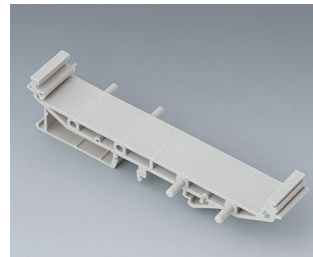
B6724337
RAILTEC SUP. 72, foot
PA 6 (30) (UL 94 V-0)
light grey



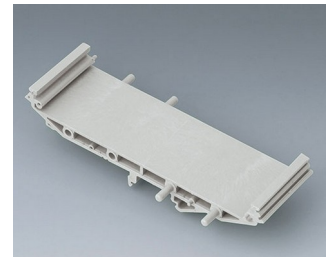
B6724440
RAILTEC SUP. 107, intermediate part
PA 6 (30) (UL 94 V-0)
light grey
118x18.5x17.5mm



B6724441
RAILTEC SUP. 107, intermediate part
PA 6 (30) (UL 94 V-0)
light grey
118x35x17.5mm



B6724442
RAILTEC SUP. 107, intermediate p. + foot
PA 6 (30) (UL 94 V-0)
light grey
118x18.5x27.5mm

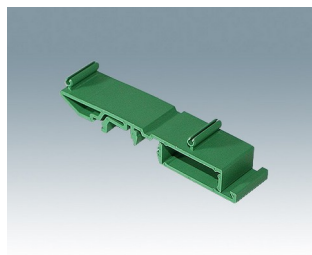


B6724443
RAILTEC SUP. 107, intermediate p. + foot
PA 6 (30) (UL 94 V-0)
light grey
118x35x27.5mm

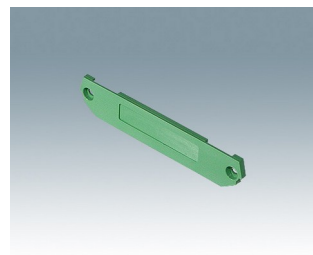
Accessory to complete



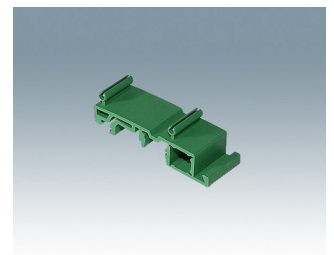
CIME/E/EC0000E
RAILTEC SUP. EXT 107, end cover
PA66 (UL 94 V-0)
green
2.5x17.5x118mm



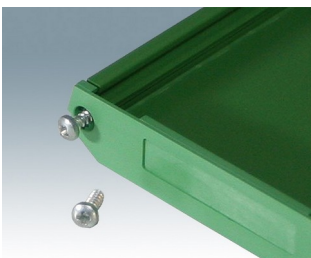
CIME/E/FE0000E
RAILTEC SUP. EXT 107, DIN rail foot
PA66 (UL 94 V-0)
green
20.5x12.5x91.5mm



CIME/M/EC0000E
RAILTEC SUP. EXT 72, end cover
PA66 (UL 94 V-0)
green
2x16x82mm



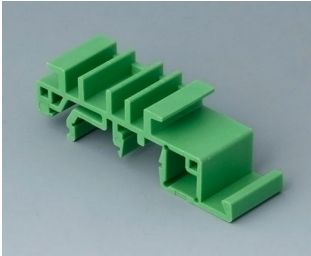
CIME/M/FE0000E
RAILTEC SUP. EXT 72, DIN rail foot
PA66 (UL 94 V-0)
green
20.5x12.5x60mm



CIME/M/SCR
Self-tapping screw

RAILTEC C

Accessory "wall/holder"



B6811542
Adapter
PA 6 (UL 94 V-0)
green



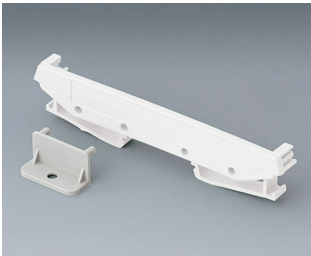
B6824532
Wall suspension element for
SUP. 72
PA 6 (30) (UL 94 V-0)
light grey



B6824533
Wall suspension element with
foot, SUP.
PA 6 (30) (UL 94 V-0)
light grey

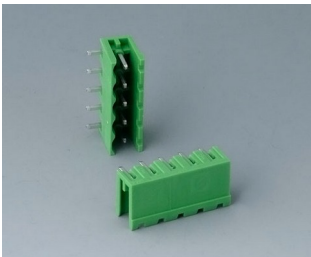


B6824542
Wall suspension element for
SUP. 107
PA 6 (30) (UL 94 V-0)
light grey

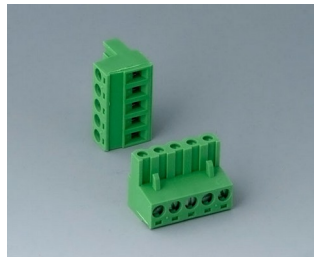


B6824543
Wall suspension element with
foot, SUP.
PA 6 (30) (UL 94 V-0)
light grey

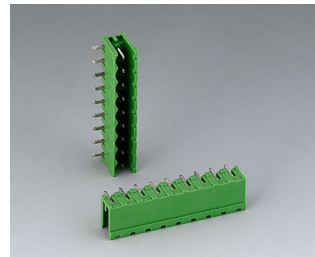
Accessory "terminals"



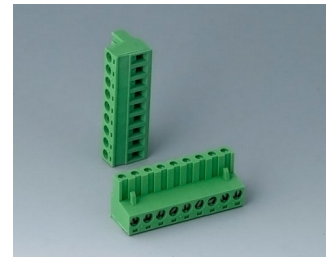
B6601222
Plug header, block 5.08
PA 6 (UL 94 V-0)



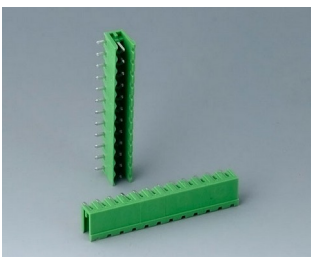
B6601223
Plug header, block 5.08
PA 6 (UL 94 V-0)



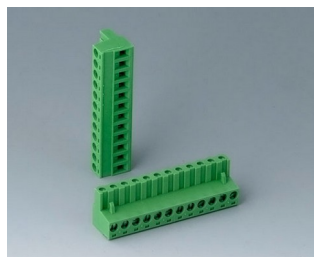
B6602222
Plug header, block 5.08
PA 6 (UL 94 V-0)



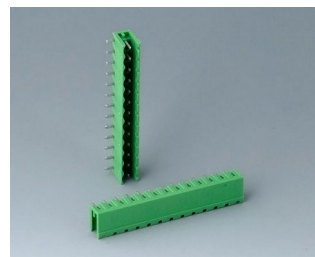
B6602223
Plug header, block 5.08
PA 6 (UL 94 V-0)



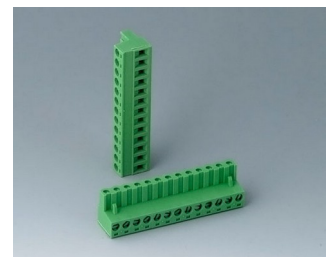
B6603222
Plug header, block 5.08
PA 6 (UL 94 V-0)



B6603223
Plug header, block 5.08
PA 6 (UL 94 V-0)

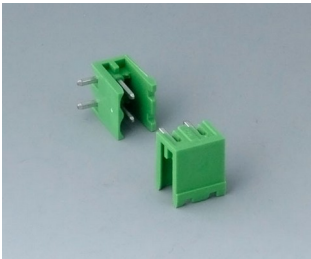


B6605222
Plug header, block 5.08
PA 6 (UL 94 V-0)



B6605223
Plug header, block 5.08
PA 6 (UL 94 V-0)

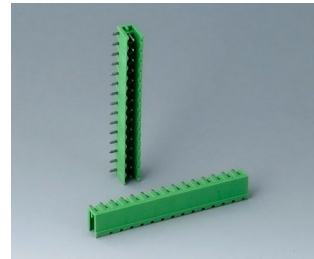
RAILTEC C



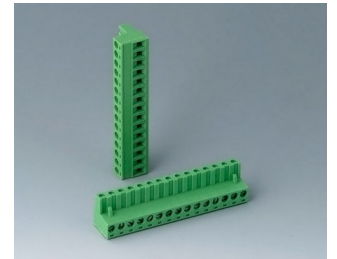
B6606222
 Plug header, block 5.08
 PA 6 (UL 94 V-0)



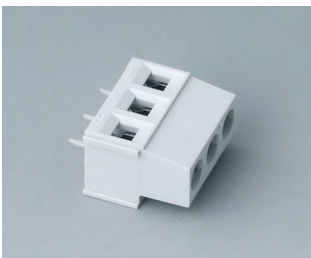
B6606223
 Plug header, block 5.08
 PA 6 (UL 94 V-0)



B6607222
 Plug header, block 5.08
 PA 6 (UL 94 V-0)



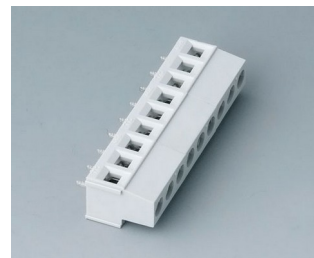
B6607223
 Plug header, block 5.08
 PA 6 (UL 94 V-0)



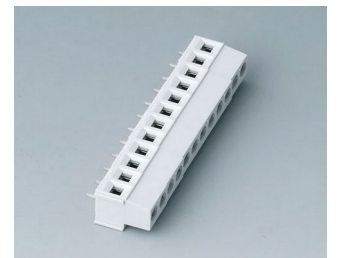
B6800650
 Terminal block, block 5.08
 PA 68 (UL 94 V-0)
 light grey



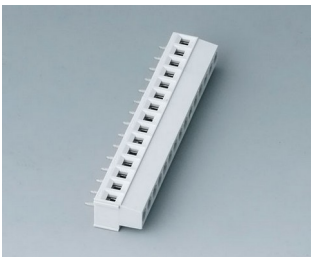
B6801650
 Terminal block, block 5.08
 PA 68 (UL 94 V-0)
 light grey



B6802650
 Terminal block, block 5.08
 PA 68 (UL 94 V-0)
 light grey



B6803650
 Terminal block, block 5.08
 PA 68 (UL 94 V-0)
 light grey



B6804650
 Terminal block, block 5.08
 PA 68 (UL 94 V-0)
 light grey

Accessory "terminal guards"



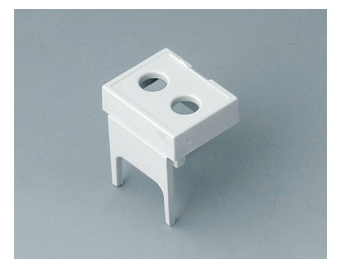
B6800111
 Terminal guards, closed
 PC (UL 94 V-0)
 light grey



B6800112
 Terminal guards, perforated,
 5.08
 PC (UL 94 V-0)
 light grey



B6800113
 Terminal guards, with holes, 5.08
 PC (UL 94 V-0)
 light grey



B6800114
 Terminal guards, with holes, 7.5
 & 7.62
 PC (UL 94 V-0)
 light grey

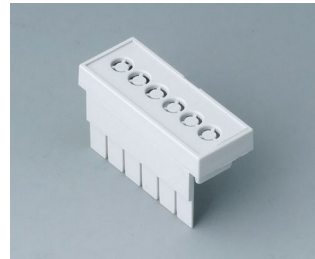
RAILTEC C



B6800115
Terminal guards, with holes,
10.16
PC (UL 94 V-0)
light grey



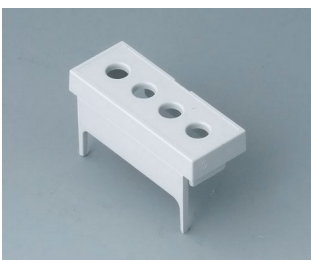
B6801111
Terminal guards, closed
PC (UL 94 V-0)
light grey



B6801112
Terminal guards, perforated,
5.08
PC (UL 94 V-0)
light grey



B6801113
Terminal guards, with holes, 5.08
PC (UL 94 V-0)
light grey



B6801114
Terminal guards, with holes, 7.5
& 7.62
PC (UL 94 V-0)
light grey



B6801115
Terminal guards, with holes,
10.16
PC (UL 94 V-0)
light grey



B6802111
Terminal guards, closed
PC (UL 94 V-0)
light grey



B6802112
Terminal guards, perforated,
5.08
PC (UL 94 V-0)
light grey



B6802113
Terminal guards, with holes, 5.08
PC (UL 94 V-0)
light grey



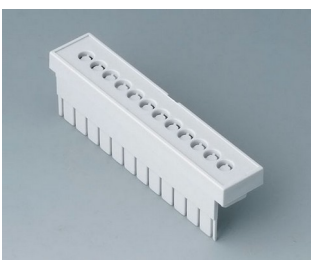
B6802114
Terminal guards, with holes, 7.5
& 7.62
PC (UL 94 V-0)
light grey



B6802115
Terminal guards, with holes,
10.16
PC (UL 94 V-0)
light grey



B6803111
Terminal guards, closed
PC (UL 94 V-0)
light grey



B6803112
Terminal guards, perforated,
5.08
PC (UL 94 V-0)
light grey



B6803113
Terminal guards, with holes, 5.08
PC (UL 94 V-0)
light grey



B6803114
Terminal guards, with holes, 7.5
& 7.62
PC (UL 94 V-0)
light grey

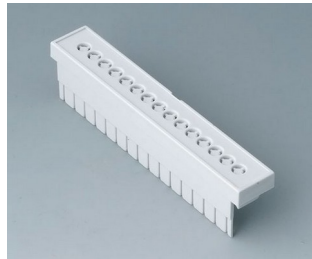


B6803115
Terminal guards, with holes,
10.16
PC (UL 94 V-0)
light grey

RAILTEC C



B6804111
Terminal guards, closed
PC (UL 94 V-0)
light grey



B6804112
Terminal guards, perforated,
5.08
PC (UL 94 V-0)
light grey



B6804113
Terminal guards, with holes, 5.08
PC (UL 94 V-0)
light grey



B6804114
Terminal guards, with holes, 7.5
& 7.62
PC (UL 94 V-0)
light grey



B6804115
Terminal guards, with holes,
10.16
PC (UL 94 V-0)
light grey

Accessory



B6800100
Front panel, 1 module
PC (UL 94 V-0)
light grey
14x42mm



B6800200
Front panel, 1 module
PC
transparent
14x42mm



B6801100
Front panel, 2 modules
PC (UL 94 V-0)
light grey
32x42mm



B6801200
Front panel, 2 modules
PC
transparent
32x42mm



B6802100
Front panel, 3 modules
PC (UL 94 V-0)
light grey
49x42mm



B6802200
Front panel, 3 modules
PC
transparent
49x42mm



B6803100
Front panel, 4 modules
PC (UL 94 V-0)
light grey
67x42mm



B6803200
Front panel, 4 modules
PC
transparent
67x42mm

RAILTEC C



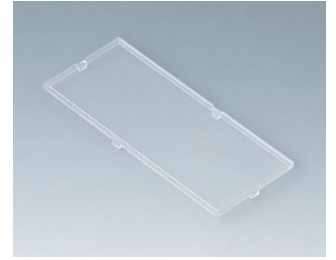
B6804100
Front panel, 5 modules
PC (UL 94 V-0)
light grey
84x42mm



B6804200
Front panel, 5 modules
PC
transparent
84x42mm



B6805100
Front panel, 6 modules
PC (UL 94 V-0)
light grey
102x42mm



B6805200
Front panel, 6 modules
PC
transparent
102x42mm



B6806100
Front panel, 9 modules
PC (UL 94 V-0)
light grey
155x42mm



B6806200
Front panel, 9 modules
PC
transparent
155x42mm



B6807100
Front panel, 12 modules
PC (UL 94 V-0)
light grey
207.5x42mm

Subject to technical modification without notice. © by OKW Gehäusesysteme, Buchen/Germany.