

HIGHLIGHTS OF THIS ISSUE

ELEGANT AND SOPHISTICATED. THE NEW NET-BOX.



01/2014



Recognising the needs of our customers and developing the right solutions is the basis of our success.



„WE KNOW
WHERE YOUR
ELECTRONICS ARE
IN THE BEST HANDS
IN FUTURE.“

EDITORIAL

DEAR READERS,

I am very pleased to be able to present the latest edition of the OKW customer magazine INSIDE, with plenty of interesting information from our company.

I am sure you will agree: successful development requires foresight and commitment. For this reason, we are constantly in search of innovative developments and technical progress to ensure that your finished product is ideally tuned to the applications of your customers.

While we are on the subject of applications: the main focus (from page 6 to 19) in this edition is on the area of „Building services systems“ and the relevant products by OKW Gehäusesysteme, in particular the new NET-BOX range of

enclosures. This is the ideal solution for equipment with reduced displays that can be interconnected quickly and easily via a network.

We hope you enjoy reading our magazine.



Dipl.-Ing. Christoph Schneider, Managing Director



„OKW ENCLOSURES ARE AT HOME ALL OVER THE WORLD.“

In OKW cases, your products become attractive eye-catchers in the direct environment of the living and working world.

INDEX

2 EDITORIAL

MAIN FOCUS **„BUILDING SERVICES SYSTEMS“**

8 **IDEAL FOR MODERN** **BUILDING SERVICES SYSTEMS**

Nowadays, building automation systems are planned and designed in such a way that they meet the individual requirements of users.

14 **THE NEW NET-BOX**

With the new NET-BOX series, OKW has demonstrated how a central control unit for many different applications can be designed so attractively that it fits perfectly into modern environments.

18 **YOU CAN FIND US HERE**

Exhibition Light + Building, Hall 9.0, Booth B64

20 **EXCELLENT DESIGN**

iF design award for enclosure series BLOB

22 **NEW PRODUCTS/ENHANCEMENTS**

24 **2PCS PERSONAL PROTECTION SYSTEM**

26 **THAT'S US**

CUSTOMER CARE Department

28 **SPONSORING**

Long-term partnership with Chess Club BG Buchen

32 **EVENTS AND MORE**

EXTRACTION OF ENERGY

SECURITY & ALARM

LIGHT & SHADOW

6 | 7

„MAIN FOCUS:
BUILDING SERVICES
SYSTEMS“

ACCESS CONTROL

WEATHER & ENVIRONMENT

HEAT & ENERGY SAVING



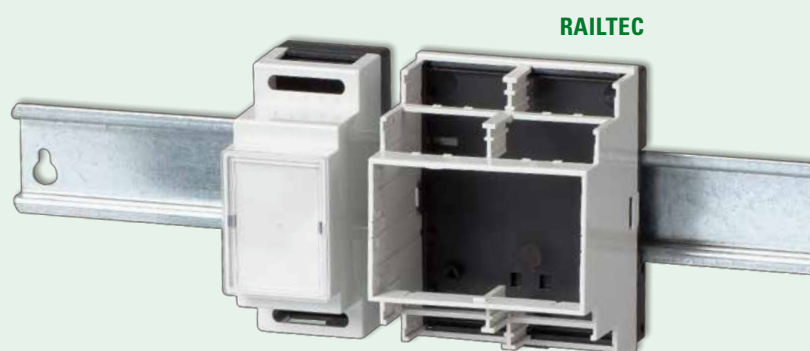


OKW enclosures can be used in many areas of domestic, solar and installation technology.

„IDEAL FOR MODERN BUILDING SERVICES SYSTEMS.“

EGON WEINLEIN, HEAD OF RESEARCH & DEVELOPMENT

Nowadays, building automation systems are planned and designed in such a way that they meet the individual requirements of users – intelligent, efficient, comfortable and unobtrusive in appearance, with a long service life. Standard enclosures by OKW make a significant contribution here.



USER-ORIENTED ENCLOSURE SOLUTIONS

Modern „Building Management“ equipment helps people to make their lives safer and more comfortable. The basis of automation is the interconnection of individual devices, pushbuttons, sensors and actuators to form one system. This allows building installations (lighting, heating and shading systems), safety engineering and other domestic appliances to be controlled automatically or to be comfortably visualised and operated using control terminals. Proceeding from classical installation technology using cables with KNX bus, radio technology is becoming more and more popular. Particularly for retrofitting, they frequently offer the best options.

Enclosures for installation – in the development of enclosures, it is particularly important to meet specific requirements. These depend to a great extent on the functions to be performed and on the environment in question. For purely functional criteria in installation on the DIN rail, the main emphasis is on compliance with the geometrical, electrical specifications, as well as

on the contact options. The design of the enclosure follows its function. In the area that is invisible to the user, OKW also offers 2 complete series of enclosures for installation on DIN rails in control cabinets or intermediate distributors: the RAILTEC B and RAILTEC C enclosures in accordance with the DIN EN 60715 TH 35 standard are fully insulated and safe to touch in accordance with VBG 4 as well as IEC529/DIN VDE 0470-1. Both series consist of many different versions and variants for many different PCB levels and terminal connections. Here, enclosure widths of 17.5 to 210 mm are available.

Enclosure for modern interfaces – multimedia devices For devices that act or are operated in the immediate environment of people, not only purely functional properties are important, but also visual criteria. This is why the outer shell, that is, the enclosure, should be of great interest even in the development process of the device. And this is exactly where OKW standard enclosures offer considerable advantages. With their



INSTALLATION SOLUTION FOR IPADS

For the installation of standard iPads, the INTERFACE TERMINAL range has now been extended by special parts. The ABS front panel in size L was given a suitable modification for the iPads 2, 3, 4 and the new iPad Air. The iPad mini fits neatly into the smaller M version of the enclosure.

INTERFACE-TERMINAL – a lot of space for operating elements, graphic displays/touch screens (6,4"/8,4" or 10,4") and electronic.



aesthetic, low-key design, great practicality, immaculate finish, excellent ergonomics and pleasant touch-and-feel, all enclosures convey the feeling of high quality. In addition, the long service lives of our plastic products are major contributing factors in ecological as well as economic terms. In the following you will find several examples from our range of enclosures that are ideally suited to applications in building services systems.

INTERFACE-TERMINAL – for universal use

The INTERFACE-TERMINAL range of enclosures was specially developed for using large-area displays (up to 6.4/8.4 or 10.4") and touchscreens, and can be used on the wall, as desktop versions on the table and/or as mobile systems. Depending on the application or on personal preferences, the individual parts of the enclosure can be flexibly combined with each other. There are for example top parts with recessed operating areas for membrane keyboards, glass panels and front panels. Bottom parts are available in various forms, including different heights

with and without battery compartment. The wall mounting of the enclosure is effected with the help of a special station, at an ergonomically favourable inclination of 20°. Alternatively, there is also a flat wall suspension element. Discussions in the run-up to product development also took account of possible, subsequent installation and repair costs. Usually, control units are permanently bolted and wired on the wall. The cables are usually routed into the enclosure from underneath and connected to the electronics in the interior. This involves an enormous amount of time, not only for initial installation but also for subsequent servicing.

Particularly in the event of subsequent repairs, the enclosure must be opened, wiring disconnected and the unit must be taken down from the wall. To prevent personal injury and damage to property, the loose cable ends must be insulated against contact and short circuits. The service technician then takes the unit away to repair it, or he repairs it on the spot. The



INTERFACE-TERMINAL – Using the station allows the operating panel to be inclined by 20°. Ergonomically favourable for operating and reading off.



entire procedure must then be repeated in reverse order. As well as the enormous amount of time involved, there is the additional risk of error when reconnecting the cables. In both cases, the INTERFACE-TERMINAL offers convincing advantages, for the wiring only has to be carried out once in the wall-mounting station. The station and the actual control unit are connected by means of a standard plug-in connector. This means that a unit can be replaced very easily during servicing and, if necessary, can also be replaced by the end user himself. Ideal applications

for the INTERFACE-TERMINAL series of enclosures are time recording systems, access control systems, communication technology units etc.

SOFT-CASE – for mobile controllers

Whether automatically or manually, and no matter where you happen to be – a wide variety of processes have to be regulated in building services systems, for example the control of light and shade, air conditioning, solar or photovoltaic systems. For these and other applications, OKW offers enclosures for remote control units and for stationary units. In both cases, the tasks in question can be controlled very comfortably. The SOFT-CASE series of mobile enclosures is even a combination of both. The SOFT-CASE was developed as a multifunctional design (upright or wide format) for using large displays in the smallest possible space. Thanks to their rounded edges, the enclosures are extremely pleasant to carry and use, and can be attached to the body and/ or to the wall by means of a combi-clip. There is a recessed



A special assembly kit allows the flush-fitting installation of the INTERFACE-TERMINAL enclosure in the wall.



BIO-PLASTIC

SOFT-CASES are also available in a bioplastic material from stock! In many applications BIOGRADE® can replace the fossil plastics used up to now. BIOGRADE® is CO² neutral, technically compostable, biodegradable and has similar properties to ABS.



SOFT-CASE – user-friendly shape, ideal for miniaturised electronic applications.



surface on the visible side to offer optimum protection for membrane keyboards. For mobile use, this series of enclosures is already fitted with battery compartments. Contactless data transfer is also possible, since the SOFT-CASE is already available from stock in a black, infrared-permeable material. A further innovation is the optionally available intermediate ring. Different colours (off-white, lava, silver, volcano) and materials allow individual designs and interesting combinations. A version worth noting here is made of TPE material for an improved touch sensation and as impact protection for the end device.

MINITEC – a perfect companion

The MINITEC series of mobile enclosures also has an intermediate ring for the same purpose, but its dimensions are significantly smaller. Whether on a lanyard, wrist strap, belt or hand strap, the mobile enclosure is always at hand, thus allowing optimum, easy handling. The standard enclosure is so small and light that it also fits into any shirt or trouser pocket. There

are two different versions: the MINITEC E (Edge) was given an inherently technical design with rounded edges, while the MINITEC D (Drop) has a droplet form inspired by nature. This unusual form received an „IF Design Award“ and was nominated for the Design Award of Germany.

ART-CASE – for transmitting, receiving, monitoring

In building services systems and safety engineering, sensors that can for example detect temperature, humidity, brightness



MINITEC:
The intermediate rings are available in a choice of different versions and colours.



ART-CASE – 4 basic forms, „round“, „square“, „oval“ and „rectangular“. 3 different bases for differing set-up and installation angles.

or the presence of persons as measured quantities are becoming increasingly popular. Whether as transmitters or receivers, OKW enclosures are ideal for these purposes. The best example is the ART-CASE range of enclosures in the basic shapes round, oval, square and rectangular.

This unique design concept makes this product range ideal for desktop and wall-mounted applications indoors, and the different versions of the top and bottom parts and stations allow many different combination options. One top part and one bottom part form the basis for a basic enclosure, supplemented by a flat battery compartment cover or a station. The latter is available in 3 different versions, in order to achieve ergonomically favourable positioning or assembly angles. In the oval/round versions the top part is available individually with or without a recessed surface for using membrane keyboards etc. The bottom part is available in a flat or in a desktop version. The rectangular ART-CASE enclosures are

available as desktop versions with a recessed panel. The ART-CASE range also contains suitable versions for use as plug cases with direct mains connection (Euro plug). The plug part is tested in accordance with DIN VDE 0620 Part 101 and is produced using flame-resistant ABS/PC V-0.



CONTACT

Dipl.-Ing. Egon Weinlein
 Head of RESEARCH & DEVELOPMENT
 Tel. +49 (0) 62 81 404-154
 EMail WeinleinE@okw.com

All interfaces disappear behind an elegant panel.



IP 172.16.1.117



„ELEGANT CENTRAL CONTROL UNIT. THE NEW NET-BOX.“

JOSEF BOTH, RESEARCH & DEVELOPMENT

With the new NET-BOX series, OKW has demonstrated how a central control unit for many different applications can be designed so attractively that it fits perfectly into modern environments. Nevertheless, none of the functionality was sacrificed for this appealing design. The high spot in the design of this new development is the effect that the electronic plugs, which are usually unsightly and coloured, are concealed behind a panel. Only a line of cables can be seen hanging down, creating a visually attractive and tidy impression.



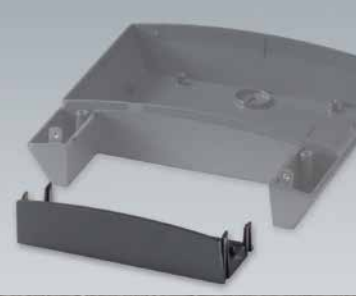
THE NET-BOX SERIES

The elegance of the NET-BOX consists in a uniformly smooth front panel, which describes a gentle arc and curves backwards towards the sides. This front panel is horizontally divided into two parts, and completely covers the bottom part. It consists of a larger top part and a smaller panel located below it. This creates the basic square shape of the NET-BOX. The three NET-BOX sizes now represent a range of products that set new accents in the use of electronic equipment in terms of design and function by offering features that have not been available so far. This range of enclosures is ideal for modern data collection systems, peripheral computer equipment and networks, for measuring and control engineering, monitoring and recording technology as well as for medical technology. Thanks to the top-quality material properties and the maximum protection class of IP 65, the NET-BOX is also ideal for use in rough conditions.

Covered and in good hands – the top part covers the compartment for accommodating two PCBs, which are bolted in

position on attachment domes. Thanks to the curved cover plate, the compartment has a comfortable installation height rising towards the centre axis, without spoiling the flat overall impression of the enclosure. With the additional sealing kit offered, the NET-BOX fulfils protection class IP 65, so that out-of-doors use is also possible. Through the downwards continuation of the bottom part on both sides, space is created for the plugs. The lower, horizontal wall of the electronics compartment accommodates the interfaces, so that the connectors with their cables can be plugged in vertically from below. This connector area is covered by the panel. It is mounted directly below the top part with a small recessed joint and, together with the latter, forms the uniform, slightly curved front surface.

The enclosures in the NET-BOX series are visually identical and are available in three sizes (W x H x D): 140 x 140 x 46.6 mm, 180 x 180 x 48.5 mm and 220 x 220 mm x 50.5 mm. As standard, the components are made of ASA + PC UL 94 V0, which also



With the optional **INFILL COVER** cover you also have the option of fitting a further PCB and visually closing the bottom part of the enclosure.



UNIFORM APPEARANCE thanks to concealed screws and plug connections.



meet exacting demands on material properties. As front parts are decisive for the design, the top part and the hood are light grey (RAL 7035), while the bottom part is in the colour „lava“.

In particular the „invisible“ fixing elements on the bottom part are responsible for the elegant appearance of the front panel: the top front part snaps into the top edge and is secured by screws at the bottom edge. These two screws disappear under the panel for the plugs and are thus additionally secured. The panel can also be pushed up and secured with two screws that are aligned vertically upwards from the lower edge. On the one hand, this guarantees free access to the plugs and interfaces by loosening only two screws. On the other hand, there are no screws to spoil the visually attractive view from the front. To meet sophisticated tastes, the two front covers are mounted with four TORX 10 fixing screws made of stainless steel. An additionally available cover plate which simply snaps into the bottom part then closes the bottom part of the NET-BOX. This accessory is useful, for example to prevent unauthorised access

to the plugs. The use of terminals is also conceivable in a compartment that has been closed in this way.

NET-BOX enclosures are ready for classical three-point wall mounting. A keyhole can easily be made, by either piercing or milling a hole for a DIN 7981 4 mm screw, specially adapted for a size 6 plastic plug with a head diameter of 8 mm. The same applies for the holes for the two other fixing points, which are located outside the electronic compartment to be sealed. The keyhole can be closed from the inside with the cap from the sealing kit. The NET-BOX is secured by means of a hole drilled in the wall for the plug in the previously defined position for the keyhole. When the plug has been inserted, the relevant screw is screwed in until a gap of 4 mm remains between the lower edge of the screw head and the wall. The enclosure is given its position and initial fixation in that the head of the screw is guided through the keyhole and the enclosure is moved to its final position by means of a slight tug downwards. After it has been aligned so that it is perpendicular, it is additionally secured



3 SIZES – plenty of room for electronics and interfaces.

PROTECTION CLASS IP 65 – with seal (accessory) for the electronics compartment.



by means of the two other screws. This allows rational wall mounting of the enclosure without the electronics compartment having to be opened. At a distance of only half a millimetre from the wall, the mounted enclosure is practically flush.

The NET-BOX appeals to customers who want to have their electronic components attractively designed and at the same time functionally „packed“. It is ideal for devices with intelligent and maintenance-free content and whose operational status can be indicated by means of LEDs or compact displays. These simple signalling and information-providing units can be integrated into the surface with minimum impact, without spoiling the fascinating front panel of the NET-BOX. The main features of the appearance of the enclosure are thus preserved. At the same time, by applying his own logo, the user can obtain his own product complete with his own corporate identity. The idea behind the development of the NET-BOX is that cable connections will continue to play an important part in electronic equipment. So far, however, the manufacturers of such devices

have paid no attention to the poor aesthetic appeal of the connectors. On the one hand, these differ greatly, depending on the interface, and on the other hand their shapes and colours often vary wildly, thus ruining the visual impression of the device. With the NET-BOX, OKW Gehäusesysteme has taken the logical step of improving the visual impression by simply hiding the connectors behind an easily removable panel, which also offers them a certain protection. With this product property, manufacturers can achieve a significant image and sales advantage in their segment.



CONTACT

Josef Both
 RESEARCH & DEVELOPMENT
 Tel. +49 (0) 62 81 404-150
 EMail BothJ@okw.com

Do you need an admission ticket?
Simply send a short e-mail to
Info@okw.com and you will
receive a voucher in the next
few days.

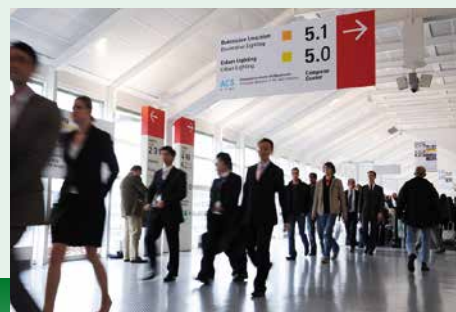


Besucher-Eingang City
Visitors-Entrance

light + building

„A LIVE EXPERIENCE: SOLUTIONS FOR TOMORROW'S BUILDINGS.“

OKW Gehäusesysteme is present again at the Light+Building exhibition. We would be very pleased if you visited our exhibition stand in **HALL 9.0, BOOTH B64**



YOU CAN FIND US HERE

Light+Building, the World's Leading Trade Fair for Architecture and Technology, will next open its doors in Frankfurt am Main from 30 March to 4 April 2014

when around 2,300 exhibitors present their latest products and innovations for the fields of lighting, electrical engineering, house and building automation and software for the building industry. Under the motto 'The best energy is energy that is not consumed', the industry will present technologies that reduce a building's energy consumption at the same time as increasing efficiency and comfort. With the rapid development of renewable energies and efficient resource usage, buildings have become more than just energy consumers. They produce, store, generate and utilise energy and are, therefore, an important part of the intelligent electricity network. At Light+Building 2014, international manufacturers will show solutions designed to meet these new challenges.

The latest developments in the fields of electrical engineering and house and building automation are to be seen at Light+Building in Halls 8, 9 and 11. Intelligent and integrated technologies ensure a perfect balance between building performance, comfort and sustainability. Modern sensory technology coupled with innovative bus technology is the key to efficient house and building automation. Intelligent energy management and electricity-network decentralisation put the focus on subjects such as buildings as power stations, integration into smart grids and e-mobility. Ways in which future-oriented energy management can be achieved is the theme of a presentation entitled "Smart powered building – your building in the smart grid". Trade visitors to Light+Building can also look forward to seeing innovations in the field of storage technology, especially with regard to battery-storage systems for electricity generated by renewable-energy technology.



Inspired by the touch sensation, the design is entirely geared to the needs of the user.

„CREATIVE IDEAS ALWAYS PAY OFF!“

The design of the BLOB series of enclosures is by:
polyform industriedesign
Martin Nußberger
80335 Munich, Germany
www.polyform-design.de



EXCELLENT DESIGN

IF PRODUCT DESIGN AWARD FOR BLOB

For 60 years now the iF product design award has been a globally recognised seal of quality for excellent product design. The iF brand has established itself internationally as a symbol for outstanding design services.

We are pleased to inform you that in the „Industry“ category, the OKW BLOB mobile enclosure has won the iF product design award 2014 and is one of the winners of the renowned iF label – awarded from a total of 3,249 submissions.

The 3 different versions of the BLOB series of enclosures were created according to the principles of „universal design“. These support applications that are flexible enough to meet the needs of a large number of people with different hand sizes and grasping volumes. This was evaluated and recognised by an

independent, international jury. The evaluation criteria of the jurors included: design quality, workmanship, choice of material, degree of innovation, environmental compatibility, functionality and ergonomics.

All prizewinners of the iF design awards 2014 will be published in the well-known iF yearbook and permanently exhibited in the new „iF design exhibition Hamburg“ for one year beginning autumn 2014.

www.ifdesign.de





RAILTEC B LOW PROFILE VERSIONS

For large-area PCBs and displays, the RAILTEC B range in the widths of 2, 4, 6 and 9 modules has been extended by an interesting version.

These flat top parts have fastening elements on the underside on which PCBs can be mounted. For the necessary attachment cutouts or openings, subsequent reworking is one option, or, for larger quantities, a suitable tool insert is also possible. The existing terminal guards of the RAILTEC B series can be used. The colour combination is black and light grey. The materials PPO and PC comply with the fire safety standard UL 94-V-0.

Do you need any more information about new products?

We shall be pleased to help you:

Tel.: +49 (0) 62 81 404-00

E-Mail: Info@okw.com

USB-COVER/ MINI USB-COVER

For universal use. For closing a USB interface. Offers protection from damage and foreign matter. For wall thicknesses up to 5 mm. Rapid installation thanks to metal clips. Machining of the enclosure required.



IN-BOX (POLYCARBONAT) REACHES FIRE-PROTECTION CLASS UL94-5V

Although the material used the IN-BOX is classified as V-2, the complete enclosure has passed the test in accordance with UL-50. This method is used to determine fire protection classifications UL94-5VA and UL94-5VB. Flammability classes UL94-5VA and UL94-5VB are determined by means of a stricter fire protection test and are thus to be considered as higher than fire protection classification V-0.



„WE CAN MEET ALL REQUIREMENTS.“

SURFACE FINISHING

We can lacquer your product according to your individual wishes with high-quality, UV-resistant two-component lacquer on a polyurethane basis. The degree of gloss is adjustable, from matt to glossy.

Special features: soft-touch lacquering to improve the „feel“, ESD lacquer (two-component lacquer on a polyurethane basis with a conductive surface, surface resistance <math>< 1 \times 10^6 \text{ ohms}</math>), and much more.



NEW PRODUCTS/ENHANCEMENTS

NEWS FROM THE SERVICE CENTER

OKW Gehäusesysteme now also has UV digital printing in its portfolio of services. The printing press works with UV-curing inks, providing a high-resolution, cost-effective solution for printing on practically all materials (enclosures, aluminium and plastic front panels, glass panels etc.). The additional white option guarantees brighter colours, even with transparent or dark materials.

In comparison to conventional printing processes, such as screen or tampo printing, the digital printing process does not require the production of special printing formes. Depending on requirements, soft colour gradations or photographic images of outstanding quality are possible in UV digital printing.

To produce your own special lacquer, OKW has its own colour mixing unit. This is not only important from an ecological point of view, but also offers you as our customer significant advantages: within a very short time we can produce only the exact quantity of lacquer required for the actual printing process. This means that you do not have to purchase larger, more cost-intensive containers, or subsequently dispose of the remaining excess amount. This also guarantees constant reproduction.



The 2PCS project is being supported within the framework of the Ambient Assisted Living Joint Programme (www.aal-europe.eu) in cooperation with the German Federal Ministry of Education and Research.

„FACILITATE OLDER PEOPLE'S LIFE SIGNIFICANTLY.“

OKW provides ideas and is partner for developments of enclosure engineering of the EU-project "2PCS" – Personal Protection and Caring System



PERSONAL PROTECTION SYSTEM

Nowadays, more and more elderly wish to live independently as long as possible, without giving up their freedom of mobility and feeling of safety. These developments form the main reason for the Personal Protection and Caring System (2PCS) project, which aims to develop a solution that addresses this wish. The aim of the project is to improve the mobility, the information accessibility and the subjective as well as objective safety of elderly people. The intended innovative solution creates a higher independency level, security level and a better access to social interaction. As a result primary end-users will become more independent and integrated in the self-serve society.

The solution exist of a high advance "watch-like" device, that can be worn on the wrist by the, so called, primary user (e.g. elderly). In case of an emergency, the watch can be used to trigger an alarm to a (nurse/external) call center and a telephone connection between user and call center is set up. Because the solution provides indoor and outdoor localization, the primary

end user can easily be tracked and traced. The project started in July 2011 and the consortium consists of 9 partners from 5 different European countries, each with his/her own speciality to guarantee a value chain orientation. OKW provides excellent experiences in enclosure engineering and health care e.g. enclosure design, material specifications, optimal tool design, high surface quality, etc. This year the solution will be widely tested in stationary and ambulant care institutions in 5 countries as well as for its private use at home. It is planned to launch a scalable end-product on the European market in 2014.

Further information www.2PCS.eu



CONTACT

Frank Wahlandt
Head of SALES & PROJECT-PRODUCT-MANAGEMENT
Tel. +49 (0) 62 81 404-196
EMail WahlandtF@okw.com

Yvonne Ellwanger
Head of CUSTOMER CARE

Alexandra Otto

Thomas Sommer

„THAT'S US.“

Silke Böhler

Daniela Heindinger



CUSTOMER CARE DEPARTMENT

WE CARE ABOUT YOU!

Would you like to place an order, do you still need documents for your project documentation, or do you have a complaint? Then you have come to the right place, the CUSTOMER CARE department. As your first contact at OKW, we make a significant contribution to the success of your project.

By providing you with targeted information, we always keep you up to date on our products and services. We are also pleased to receive your inquiries and any kind of feedback, which we then pass on to the right place for further internal processing. We can also establish personal contact with the persons qualified to answer your questions, in order to provide fast and targeted help.

CONTACT

Silke Böhler
Tel. +49 (0) 62 81 404-127
EMail BoehrerS@okw.com

Daniela Heindinger
Tel. +49 (0) 62 81 404-128
EMail HeindingerD@okw.com

Thomas Sommer
Tel. +49 (0) 62 81 404-141
EMail SommerT@okw.com

Alexandra Otto
Tel. +49 (0) 62 81 404-176
EMail OttoA@okw.com

Chess is the fastest game in the world, because in chess you have to think through thousands of thoughts every second.
(Albert Einstein)



„MANY YEARS OF SUCCESS.“

KARLHEINZ EISENBEISER, 1. CHAIRMAN

2003 saw the beginning of an unusual partnership, which – filled with new ideas – is still being creatively developed and which can truly be described as a success story: OKW Managing Director Christoph Schneider and Karlheinz Eisenbeiser, Chairman of the chess club BG Buchen 1980 e.V. and head of the chess group at the Burghardt grammar school in Buchen, initiated a cooperation that characterised chess life in Buchen and made the name of the town of Buchen very well known at national level in connection with chess as a sport.

SCHACHCLUB
BG BUCHEN 1980 E.V.



SPONSORING

The chess club, which was founded in 1980, developed from the chess group at the Burghardt grammar school and was initially composed only of pupils from the school. However, the group was gradually extended to include pupils from other schools, and the next logical step was to open the club to all chess fans from Buchen – especially since the Buchen/Walldürn Chess Club, which was founded in 1948, had meanwhile transferred to Walldürn. In this phase, the sponsoring by OKW was a ground-breaking development. Up to then, the so-called BG Buchen teams had mainly played at school level – albeit nation-wide – and in the Odenwald chess district: thereafter, at club level, they put out their feelers in the direction of the Heidelberg region.

This development continued to make rapid progress, and in the 2013/14 season the chess club by now has six teams in the adult section of the Baden Chess Federation. Here, the spectrum ranges from the district class through the regional league and

as far as the second national division, in which the Buchen chess club competes with teams from major cities. Even the world class Grand Master Jozsef Pinter from Budapest (Hungary) plays for the BG Buchen chess club. In addition to this, the chess club now has its sixth young person doing a volunteer social year, with the main task of managing lessons in the work groups, of which there are now 10, in schools in Buchen and in the surrounding area.

The chess club has also gained prominence by organising many chess events. Besides the normal events, it also organises at least ten additional events a year, and is always on the lookout for something new: examples here are the Baden Chess Congress 2006 in the multi-purpose hall in 74722 Hainstadt with more than 400 competitors, the final of the Baden-Württemberg School Chess Team Championships in seven squads, the top-class international Open in the Old Town Hall in Buchen and

The basis: the chess club developed from the chess group at the Burghardt grammar school in Buchen (BGB).



The Buchen chess club is **highly successful** in all age groups.



now in the Prinz Carl Hotel (Buchen), the traditional fast chess tournaments at the Schützenmarkt fair and the Oliver Wiegand Memorial Tournament, a visit by the chess legend Anatoli Karpow to Buchen and much more. You can always find the latest as well as archived information on the homepage, which is always kept up-to-date: www.schachclub-buchen.de.

On the other hand, however, the partnership with OKW also has above-average effects, for every year the two sides think about services which are simply an absolute luxury for a chess club: for example, the BG Buchen chess teams go to their competitions in the OKW coach, all members – in time for the 10th anniversary – have been kitted out with new shirts, for home matches there are posters in the town, nameplates for the players, clipboards and special game forms for the team matches. In 2012, for example, a competition was also carried out in the OKW logistics centre between select Odenwald players and the national youth team, which was staying in Buchen for a week's training, and

much, much more.

For both sides, however, it is also important to enrich life in Buchen. Here, the chess club tries to support and encourage the events of the town of Buchen and of the other Buchen clubs as actively as possible. This has made the game of chess synonymous with the town of Buchen, a fact that is immediately obvious on account of the regular press work. This is only an excerpt of the activities: regular participation in the opening procession of the „Schützengesellschaft“ to the Buchen Schützenmarkt fair, support for the carnival society Narhalla during events, organisation of a hobby chess/football tournament in the clubhouse and on the grounds of FC Viktoria Hettingen for other local clubs etc.

Recognition for all of these activities is also reflected in many different types of award. In 2013 the chess club BG Buchen came fourth in the „Club of the Year“ competition organised by the German Chess Federation at national level, and the chess club



Renowned players like the world class Grand Master Jozsef Pinter from Hungary, play for the BG Buchen chess club.



has also won several first places in presentations by the local Buchen sports federation and in the „Stars of Sport“ competition organised by the cooperative banks (Volksbanken). As a special honour, two films were shot about the chess life of the BGB - this film report also includes an interview with OKW Managing Director Christoph Schneider which was broadcast on the television programme „Sport im Dritten“ – and the simultaneous match of Elisabeth Pähtz – Germany’s best woman chess player played simultaneously against 27 opponents in the Prinz Carl Hotel in Buchen.

At the moment an examination is being carried out by the University of Ulm on stress test behaviour in cases of high stress levels. A scientific team comes to Buchen three times to examine 50 members of the chess club using various methods. In addition, the Baden Chess Federation is carrying out a long-term project for girls and young women which was started in September 2013.

A few weeks ago Buchen was declared the third regional training centre (after Baden-Baden and Hockenheim) of the Baden and Württemberg Chess Federations, representing a special upgrading. In the final resort, a welcome side effect of this partnership is also the harmonious cooperation. For example, OKW representatives attend the chess events, while the chess club comes to OKW’s public relations activities such as open days and jazz concerts. It is then possible to have pleasant conversations, for these form the basis of this unusual partnership



CONTACT

Karlheinz Eisenbeiser, 1. Chairman
Schachclub BG Buchen 1980 e.V.
EMail BGB@eisenbeiser.de
www.schachclub-buchen.de



Extreme mountaineer Hans Kammerlander during his talk on „Seven Second Summits“ on Saturday, 16 November 2013, in the packed OKW logistics centre.

„SEVEN PEAKS ON ALL SEVEN CONTINENTS.“

At regular intervals, OKW Gehäusesysteme opens its doors for cultural events, and would like to enrich the regional scene with special events. Under the slogan **MOMENTS INSIDE** you can experience special moments in a business environment. Then the motto is, come in, feel at home and enjoy the somewhat different atmosphere.



EVENTS


Lecture by extreme mountaineer Hans Kammerlander

On Saturday, 16 November 2013, the extreme mountaineer Hans Kammerlander was once more our guest in Buchen to present his latest lecture „Seven Second Summits“ in the packed OKW logistics centre. In his talk he took the audience with him on his adventurous travels through the seven continents, climbing the second-highest mountain in each of them. Only insiders will know „Mount Kenia“, „Ojos del salado“, „Dychtau“, „Puncak Trikora“, „Mount Logan“ or „Mount Tyree“, which Hans Kammerlander chose as his targets and which he tackled in the company of old friends like Toni Mutschlechner. On the other hand, most people have heard of the legendary „K2“ in the Himalayas, the seventh peak in this group.

Even after his great successes, the extreme mountaineer from South Tyrol has remained down-to-earth, likeable and approachable. He also radiates this modesty in his travelogues.

Even before his lecture, Mr Kammerlander answered the audience's questions, signed books and T-shirts and allowed himself to be photographed. When the head of the organising committee, Josef Both, was finally able to officially welcome him, the audience was able to admire his climbing skills, even if the short climb up to the raised platform (over a dummy K2) was not a great challenge for the extreme climber.

When he reached the platform, Hans Kammerlander made it clear to the audience why he was addressing this particular project, and the answer seemed logical to all present. „Many famous mountains have meanwhile become catalogue material“, said Kammerlander, who in his last project also took the opportunity not only to accept the challenge but also to record the beauty of the scenery and his encounters with the people. An interested amateur would already have gone beyond his



In his lecture, the extreme mountaineer Hans Kammerlander reported on his numerous climbing expeditions throughout the world.

own limits in the hours of walking through ice and snow, through rain forests, dust and deserts, just to get to these mountains. But only then did the actual climbing begin for the endurance athlete Kammerlander, together with privation, extreme temperatures, weather vagaries and other conditions that one cannot completely protect oneself from in such harsh climates.

Hans Kammerlander is aware of the risks. And he too has lost mountaineering partners in the course of his expeditions. „Life must go on,“ he says, even in the face of such tragic events, for example when his French companion, with whom he had already climbed K2, one year later did not return from his expedition to the 8485 metre high „Makalu“. His pictures and descriptions also made it clear that the climbs to the second-highest mountains of the continents was not just fun and games. However, all of the trials and tribulations are forgotten again when the summit has been reached and when the unique view of the mountain

panorama can be appreciated, says Kammerlander. „It’s true, we were maybe a bit careless,“ he said when he was accused of having climbed the wrong summit in the mist at „Mount Logan“. Of course, Kammerlander was not going to take that lying down. That is why he climbed the mountain again only one year later. „With GPS support this time to correct the discrepancy of exactly seven metres.“

Despite the feeling of adventure, he had above all discovered the beauty of nature for himself in the course of his expeditions. This is also where his attention would be focused in future, as he then told his enthusiastic audience, who responded to his riveting lecture with prolonged applause

„MANY YEARS OF LOYALTY TO THE COMPANY.“

25 years

Lothar Büttel
RESEARCH & DEVELOPMENT
Product management

25 years

Josef Both
RESEARCH & DEVELOPMENT
Construction/Development

10 years

Katharina Stang
PRODUCTION
Coating/CNC

10 years

Markus Gerlach
SUPPLY
Dispatch



ANNIVERSARIES 2013

Last year, several OKW staff members celebrated important long-service anniversaries. This shows what an outstanding corporate culture OKW Gehäusesysteme GmbH enjoys.

We should once more like to express our gratitude to our colleagues for their longstanding loyalty to the company. We also wish them all the best and good health for their professional as well as private futures.

25 years

Birgit Köhler
SUPPLY
Settlement documents

10 years

Andre Beuchert
DISTRIBUTION
Area Sales Manager



25 years

Evi Gehrke
MANAGEMENT
Assistant to the Management



IMPRESSUM

Publisher
Odenwälder Kunststoffwerke
Gehäusesysteme GmbH
Friedrich-List-Str. 3
D-74722 Buchen, Germany

+49 (0) 62 81 404-00
+49 (0) 62 81 404-144
Info@okw.com
www.okw.com

Managing director
Dipl.-Ing. Christoph Schneider

Issue 01/2014 (March 2014)

Editors
Kay Hirmer
Josef Both
Frank Wahlandt
Egon Weinlein

Graphic
Kay Hirmer
polyform industriedesign
Martin Nußberger
80335 Munich, Germany

Print
Laub GmbH & Co. KG
74834 Elztal-Dallau, Germany

All photos, graphics, text and other components of this customer magazine INSIDE are Copyright by the Odenwälder Kunststoffwerke Gehäusesysteme GmbH (short form: OKW Gehäusesysteme GmbH) and are their property.

The commercial use of any kind of content requires the prior consent of OKW Gehäusesysteme GmbH.



 OKW Gehäusesysteme GmbH

 @OKWGehaeuse

 OKW Gehäusesysteme GmbH

 OKWgehaeuse